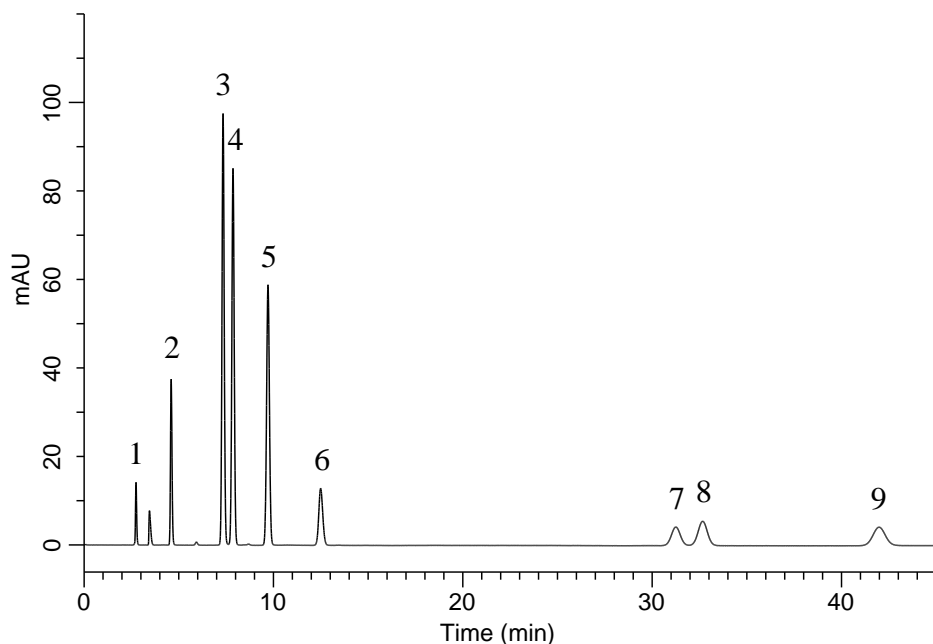


## Analysis of Preservatives and Sweetener



### Conditions

**System** : GL7700 HPLC system  
**Column** : InertSustain AQ-C18  
 (5  $\mu$  m, 250 x 4.6 mm I.D.)  
**Column Cat. No.** : 5020-89731  
**Eluent** : A) CH<sub>3</sub>CN  
 B) 0.1 % H<sub>3</sub>PO<sub>4</sub> in H<sub>2</sub>O  
 A/B = 15/85, v/v  
**Flow Rate** : 1.0 mL/min  
**Col. Temp.** : 40 °C  
**Detection** : UV 210 nm (PD7752 PDA Detector)  
**Injection Vol.** : 10  $\mu$  L  
**Sample** : Standard

### Analyte:

1. Ascorbic acid	10 mg/L
2. Acesulfame potassium	10 mg/L
3. Saccharin	10 mg/L
4. Caffeine	10 mg/L
5. <i>p</i> -Hydroxybenzoic acid	10 mg/L
6. Aspartame	10 mg/L
7. Sorbic acid	10 mg/L
8. Benzoic acid	10 mg/L
9. Dehydroacetic acid	10 mg/L