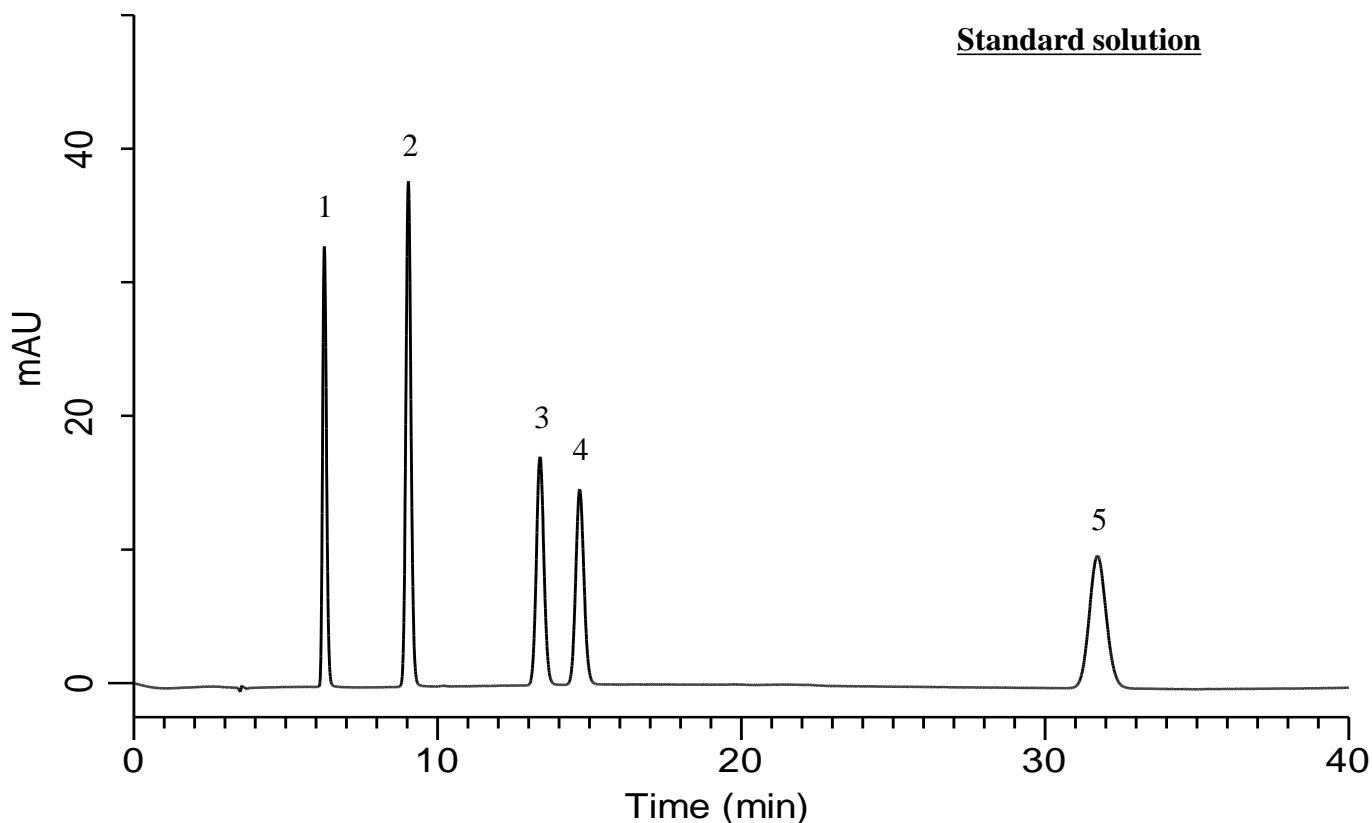


## Analysis of Nucleotide



### Conditions

**System** : GL7700 HPLC system  
**Column** : InertSustain AQ-C18  
 (5  $\mu$  m, 250 x 4.6 mm I.D.)  
**Column Cat. No.** : 5020-89731  
**Eluent** : A) CH<sub>3</sub>OH  
 B) 50 mM TEA in H<sub>2</sub>O  
 (pH 5.0, H<sub>3</sub>PO<sub>4</sub>)  
 A/B = 1/99, v/v  
**Flow Rate** : 1.0 mL/min  
**Col. Temp.** : 40 °C  
**Detection** : UV 260 nm (PD7752 PDA Detector)  
**Injection Vol.** : 5  $\mu$  L  
**Sample** : Standard

### Analyte

Nucleotides  
 1. 5'-CMP (50  $\mu$  g/mL)  
 2. 5'-UMP (50  $\mu$  g/mL)  
 3. 5'-GMP (50  $\mu$  g/mL)  
 4. 5'-IMP (50  $\mu$  g/mL)  
 5. 5'-AMP (50  $\mu$  g/mL)