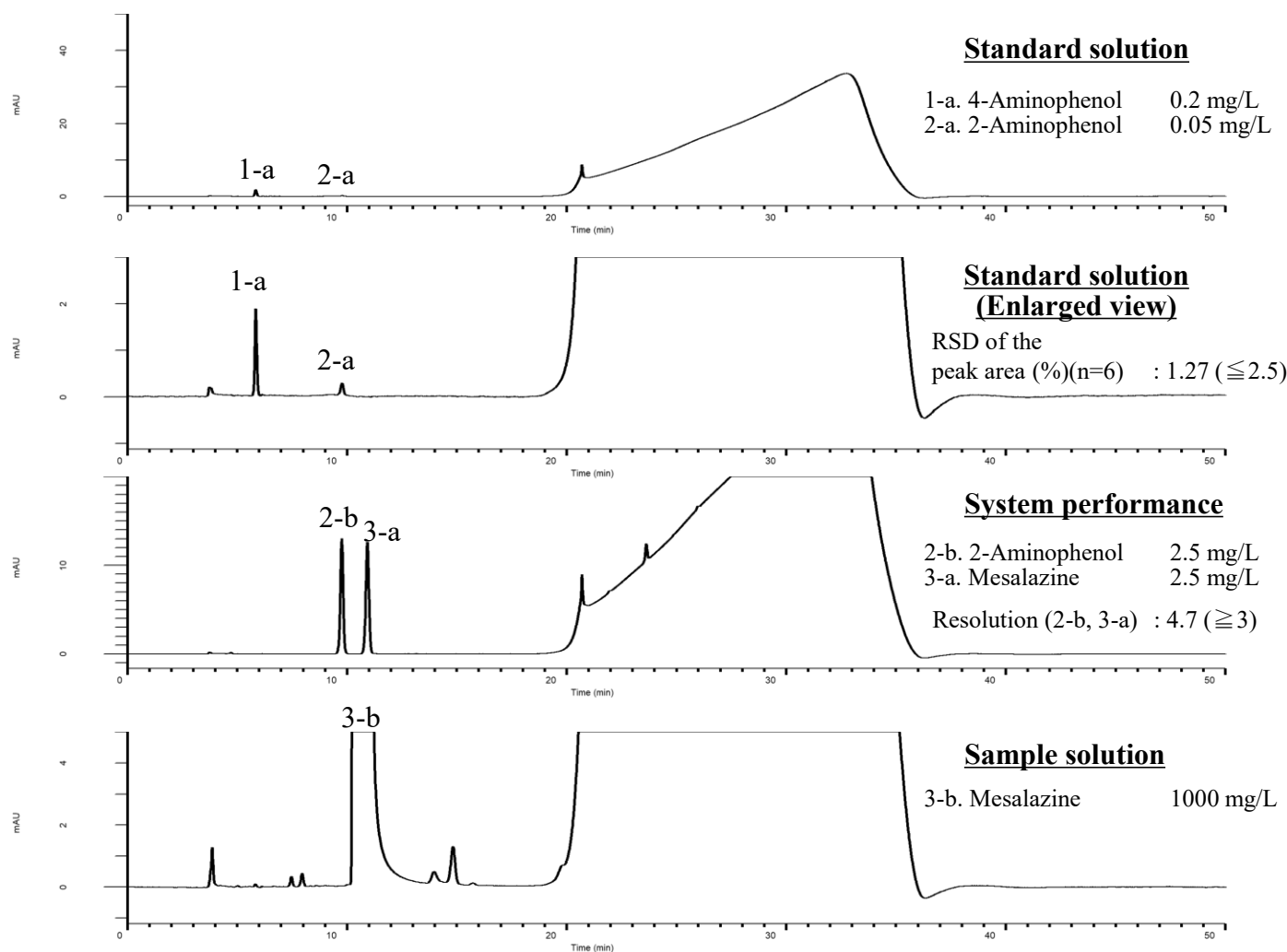


Analysis of Mesalazine

(Under the Condition of the draft for the Japanese Pharmacopoeia, (6) 2-Aminophenol and 4-Aminophenol)



Conditions

System : GL7700 HPLC system
Column : InertSustainSwift C18 HP
 (3 μm, 250 x 4.6 mm I.D.)
Column Cat. No. : 5020-88226
Eluent : A) 1.7 g/L HClO₄ + 1.0 g/L H₃PO₄ in CH₃CN
 B) 2.2 g/L HClO₄ + 1.0 g/L H₃PO₄ in H₂O

Analyte:

1. 4-Aminophenol
 2. 2-Aminophenol
 3. Mesalazine

Time(min)	A(vol %)	B(vol %)
0.0	0	100
10.0	0	100
25.0	60	40
27.0	0	100
50.0	0	100

Pressure: 17 - 20 MPa

Flow Rate : 0.8 mL/min
Col. Temp. : 25 °C
Detection : UV 220 nm (PD7752 PDA Detector)
Injection Vol. : 20 μL
Sample : Standard