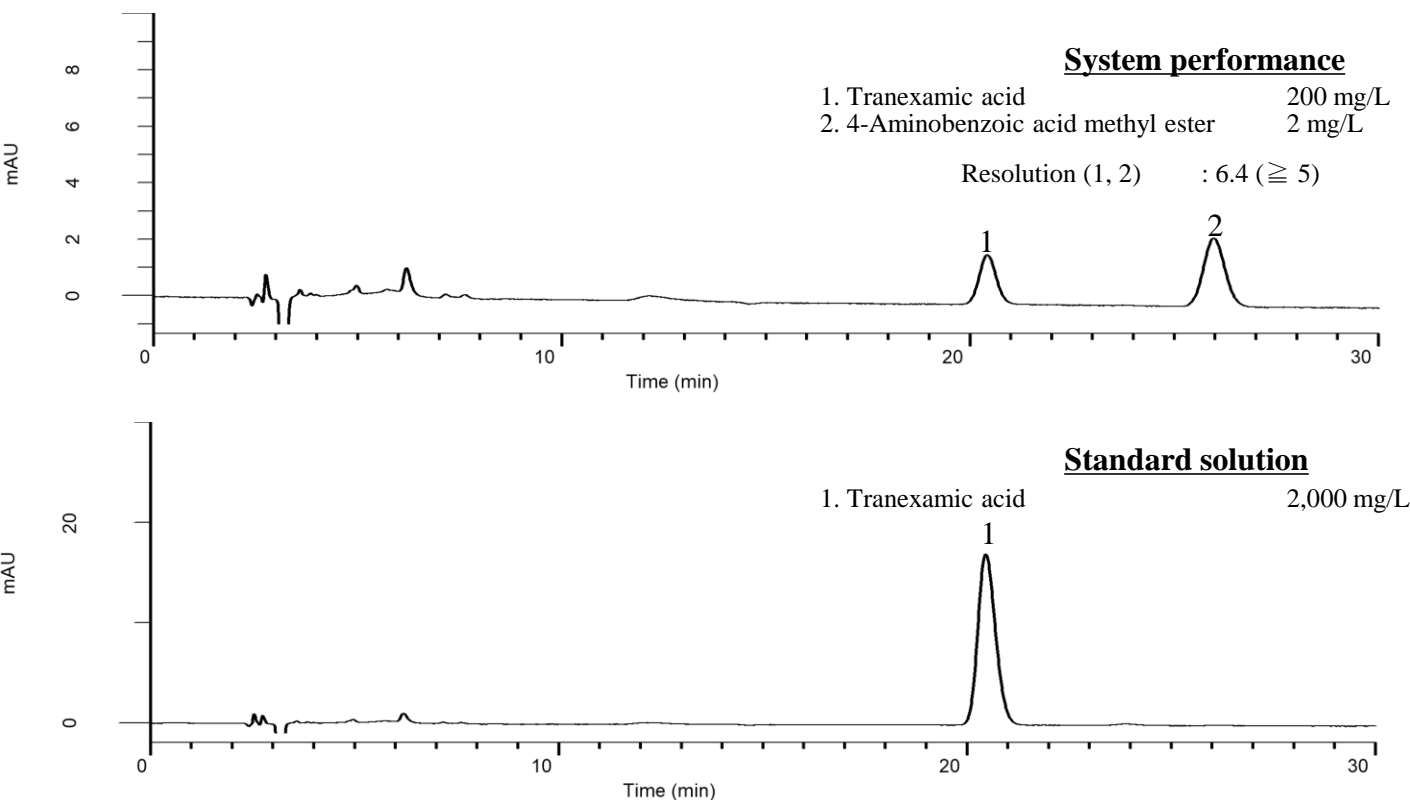


Analysis of Tranexamic acid (Under the Condition of the Japanese Pharmacopoeia)



Conditions

System : GL7700 HPLC system
Column : InertSustain AQ-C18
 (5 μ m, 250 x 6.0 mm I.D.)
Column Cat. No. : 5020-89760
Eluent : A) CH₃OH
 B) Buffer*
 A/B = 40/60, v/v
Flow Rate : 1.4 mL/min
Col. Temp. : 25 °C
Detection : UV 220 nm (PD7752 PDA Detector)
Injection Vol. : 20 μ L
Sample : Standard

*Dissolve 11.0 g of anhydrous sodium dihydrogen phosphate in 500 mL of water, and add 5 mL of triethylamine and 1.4 g of sodium lauryl sulfate. Adjust pH 2.5 with phosphoric acid, add water to make 600 mL.

Analyte:

1. Tranexamic acid

RSD of the
peak area (%) (n=6) : 0.02 (≤ 0.6)

【NOTE】

- 1) Fully equilibrate the column prior to the analysis. Fully equilibrate the column with eluent for at least 24 hrs at 1 mL/min.
- 2) Prepare the eluent at time of use, otherwise the retention time may shift.