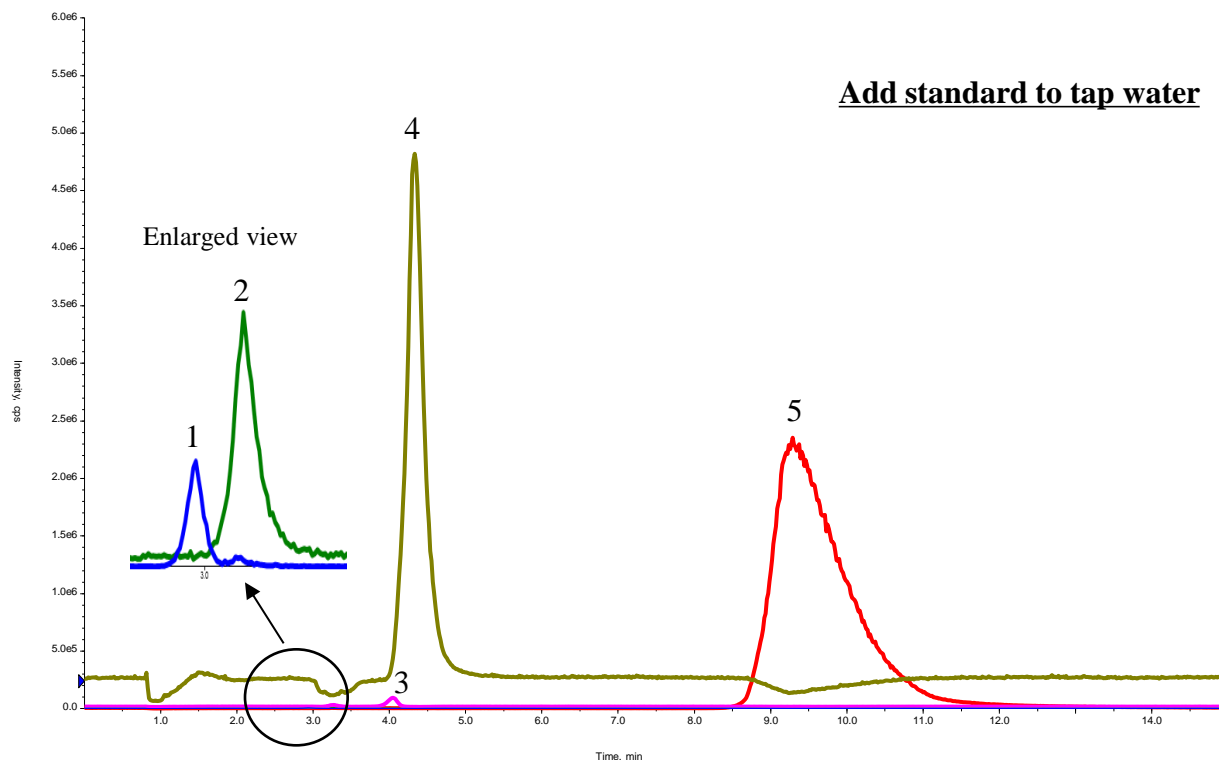


Analysis of Bromate ion in tap water

Add standard to tap water



Conditions

Column : SYPRON AX-1
 (5 μ m, 100 x 2.1 mm I.D.)
Column Cat. No. : 5020-11002
Eluent : A) CH₃CN
 B) 25 mM CH₃COONH₄ in H₂O
 A/B = 30/70, v/v

Flow Rate : 0.2 mL/min

Col. Temp. : 40 °C

Detection : LC/MS/MS (4000 Q TRAP® ESI, Negative, SRM)

Injection Vol. : 10 μ L

Analyte:

Analyte	Q1 / Q3
1. Bromate ion	127.0 / 111.0
2. Chloride ion	35.0 / 35.0
3. Chlorate ion	82.9 / 82.9
4. Nitrate ion	62.0 / 62.0
5. Hydrogen sulfate ion	96.9 / 79.9