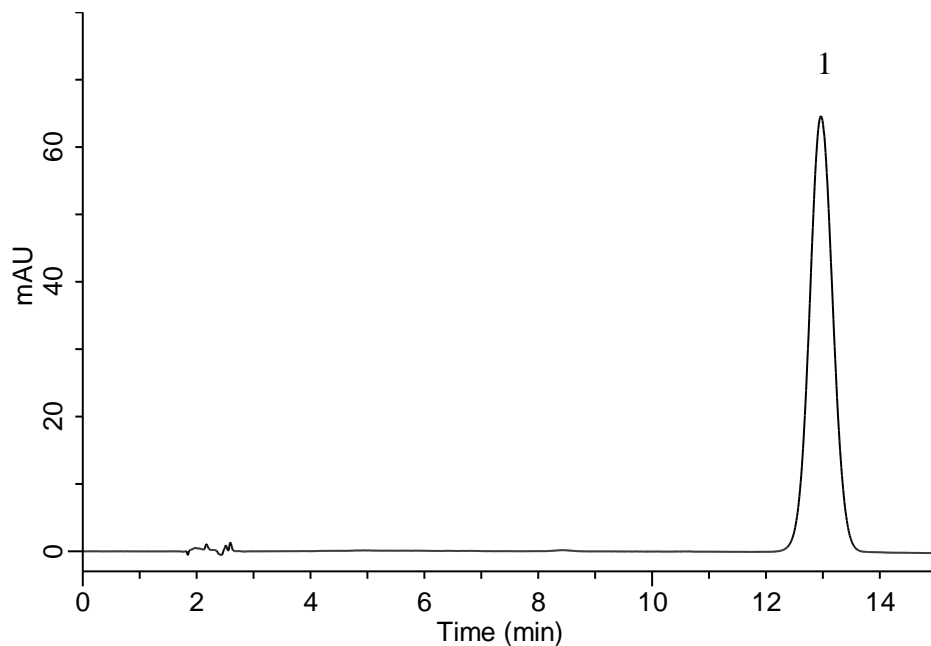


Analysis of Clomipramine Hydrochloride

(Under the Condition of the Japanese Pharmacopoeia, Clomipramine Hydrochloride Tablets)



Conditions

System : GL7700 HPLC system
Column : Inertsil ODS-3
 (10 μ m, 250 x 4.6 mm I.D.)
Column Cat. No. : 5020-01632
Eluent : Solution*
Flow Rate : 1.22 mL/min
Col. Temp. : 25 °C
Detection : UV 254 nm (PD7752 PDA Detector)
Injection Vol. : 20 μ L
Sample : Standard

Analyte:

1. Clomipramine Hydrochloride	100 mg/L
Theoretical plate number	: 4,620 (\geq 3,000)
Tailing factor	: 1.03 (\leq 1.5)
RSD of the area (%) (n = 6)	: 0.06 (\leq 1.0)

*Dissolve 2 g of sodium 1-octanesulfonate in 300 mL of water, and add 450 mL of methanol, 250 mL of acetonitrile and 1 mL of 0.5 mol/L sulfuric acid TS.