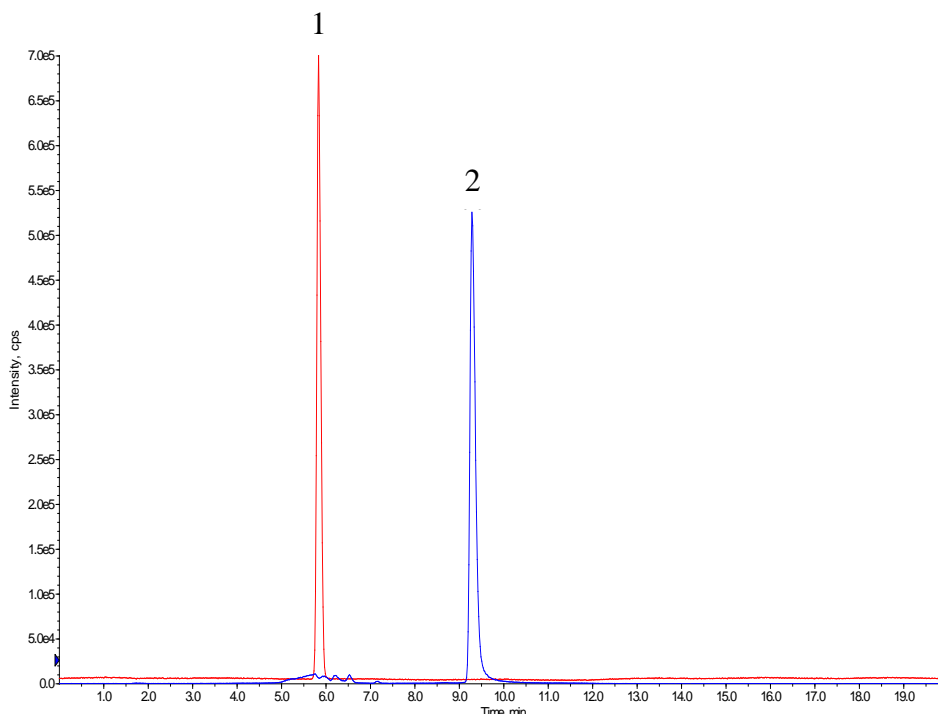


Analysis of Tyramine and Histamine



Conditions

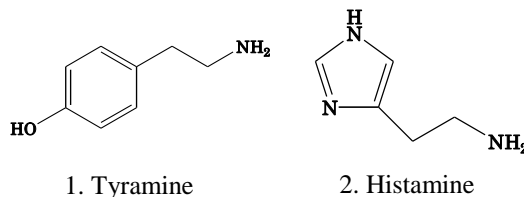
Column : InertSustain Amide
(3 μm, 150 x 2.1 mm I.D.)
Column Cat. No. : 5020-88731
Eluent : A) 0.1 % HCOOH in CH₃CN
 B) 0.1 % HCOOH, 20 mM HCOONH₄ in H₂O

Time (min)	A (%)	B (%)
0.00	95	5
10.0	50	50
10.1	95	5
15.1	95	5

Flow Rate : 0.3 mL/min
Col. Temp. : 40 °C
Detection : LC/MS/MS (4000Q TRAP®, ESI, Positive, SRM)
Injection Vol. : 5 μL
Sample : Standard

Analyte:

1. Tyramine
 2. Histamine
 (100 ng/mL each)



CUR	CAD	IS	TEM	GS1	GS2
10	Medium	5500	600	60	40
	Q1	Q3	DP	CE	CXP
Tyramine	138	77	31	44	8
Histamine	112	95	46	23	12