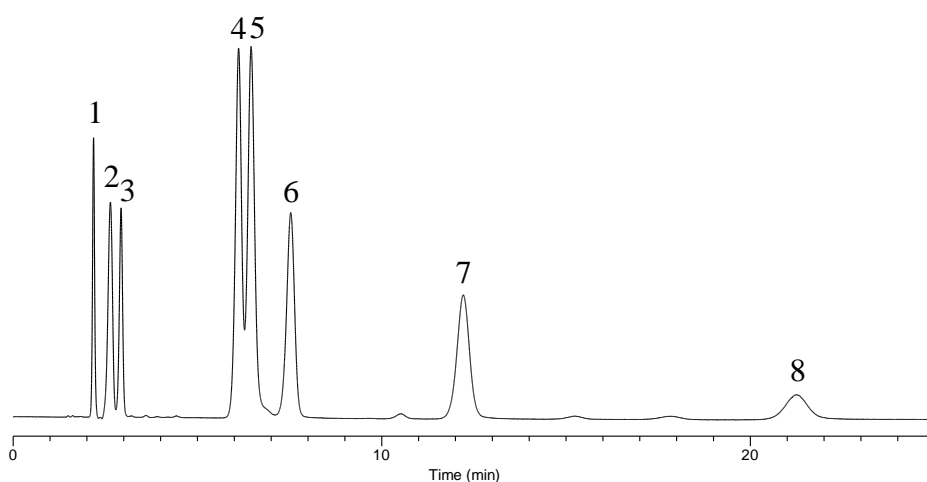


## Analysis of Purine bases



### Conditions

**Column** : InertSustain Amide  
 (5  $\mu$  m, 150 x 2.1 mm I.D.)  
**Column Cat. No.** : 5020-88607  
**Eluent** : A) CH<sub>3</sub>CN  
 B) 50 mM HCOONH<sub>4</sub> in H<sub>2</sub>O  
 C) HCOOH  
 A/B = 90/10/0.1, v/v/v  
**Flow Rate** : 0.2 mL/min  
**Col. Temp.** : 40 °C  
**Detection** : UV 254 nm  
**Injection Vol.** : 0.5  $\mu$  L  
**Sample** : Standard

### Analyte:

1. Caffeine  
 2. Theophylline  
 3. Theobromine  
 4. Hypoxanthine  
 5. Adenine  
 6. Xanthine  
 7. Guanine  
 8. Uric acid  
 (100 mg/L each)