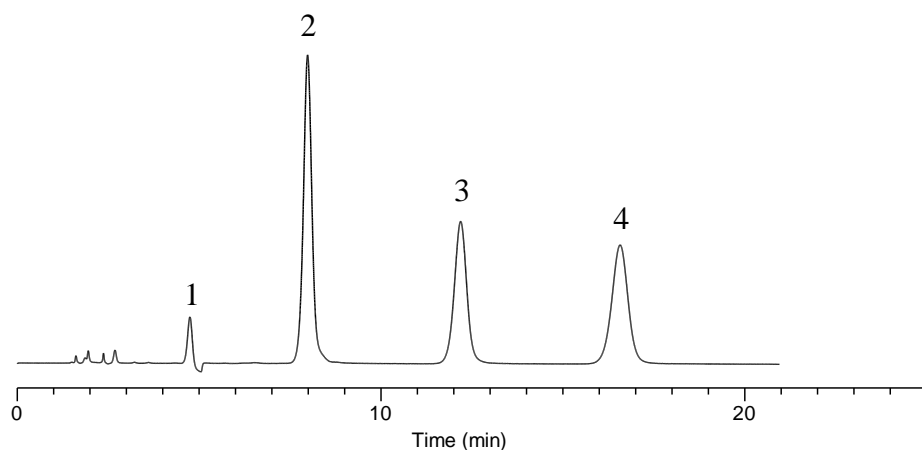


Analysis of Melamine related compounds



Conditions

Column : InertSustain Amide
 (5 μ m, 150 x 2.1 mm I.D.)
Column Cat. No. : 5020-88607
Eluent : A) CH₃CN
 B) 10 mM HCOONH₄ in H₂O
 A/B = 90/10, v/v
Flow Rate : 0.2 mL/min
Col. Temp. : 40 °C
Detection : UV 215 nm
Injection Vol. : 0.5 μ L
Sample : Standard

Analyte:

| | |
|------------------|-----------|
| 1. Cyanuric acid | 1 mg/mL |
| 2. Melamine | 0.1 mg/mL |
| 3. Ammelide | 0.1 mg/mL |
| 4. Ammeline | 0.1 mg/mL |