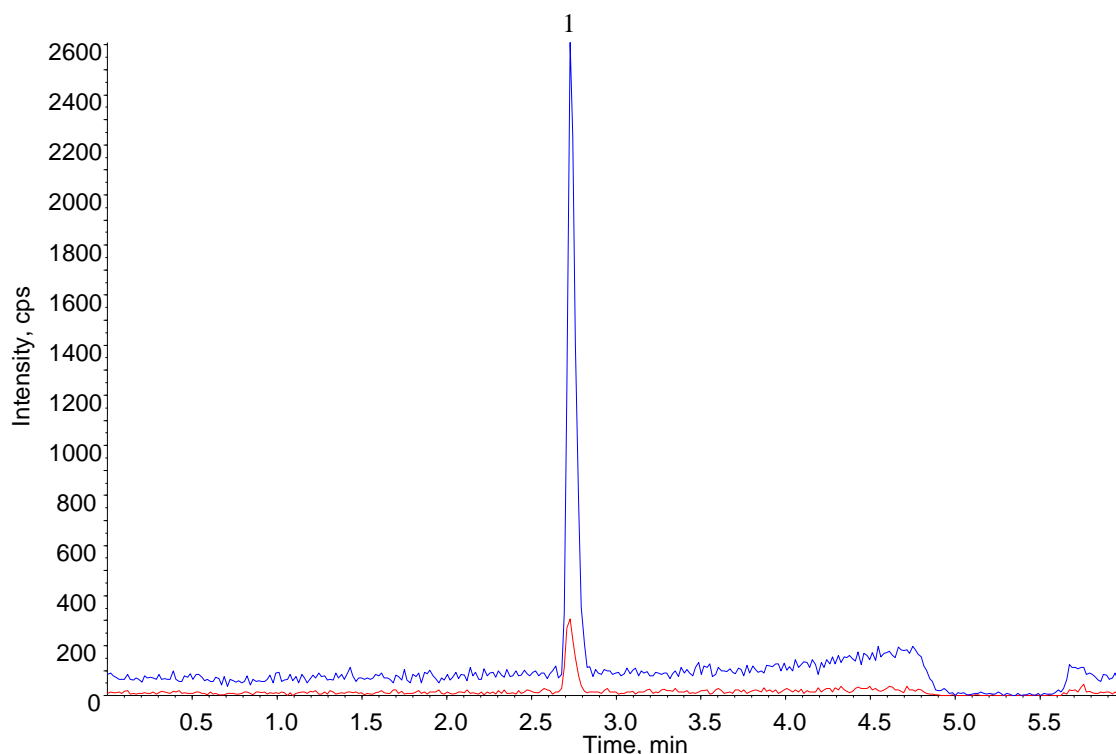


Analysis of Fipronil



Conditions

Column : InertSustainSwift C18
 (1.9 μ m, 100 x 2.1 mm I.D.)
Column Cat. No. : 5020-88230
Eluent : A) CH₃CN
 B) H₂O

Analyte: Q1 Q3
 1. Fipronil 435 330
 435 399
 Conc. 1.0 μ g/L

Time (min)	A (vol%)	B (vol%)
0.0	75	25
3.00	100	0
4.00	100	0
4.01	75	25
6.00	75	25

Flow Rate : 0.5 mL/min
Col. Temp. : 40 °C
Detection : LC/MS/MS (3200QTRAP®: ESI Negative, MRM)
 CUR CAD IS TEM GS1 GS2
 15 10 -4500 450 50 50

Injection Vol. : 5 μ L