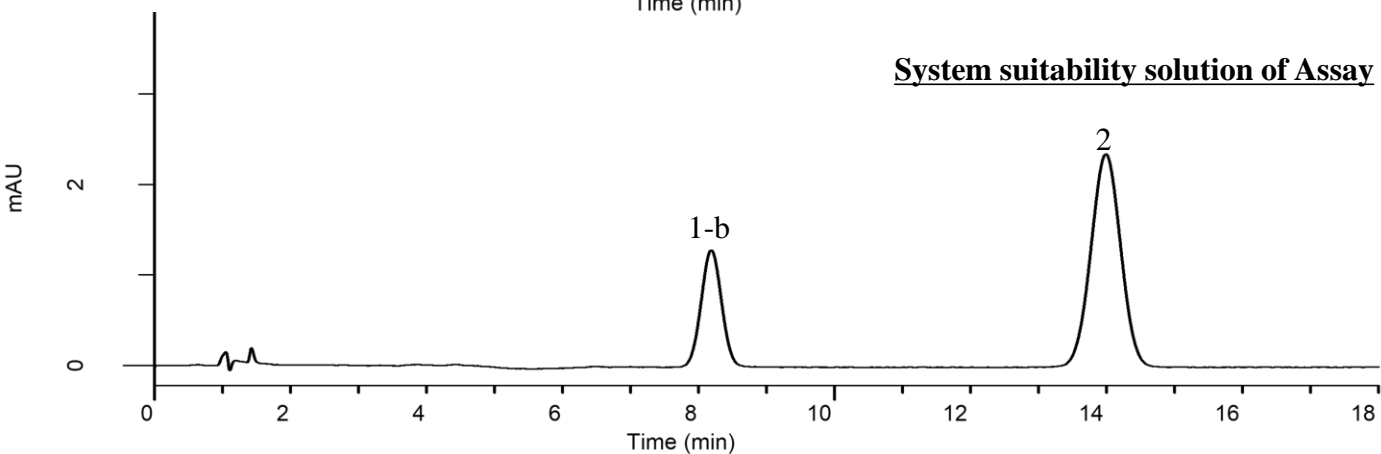
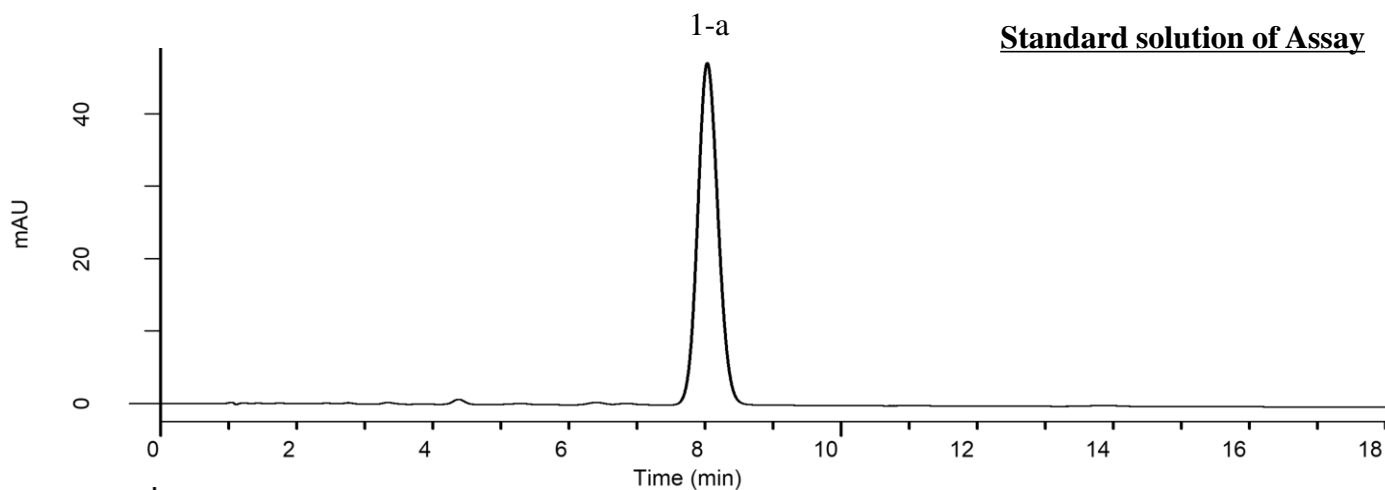


Analysis of Dexamethasone Sodium Phosphate

(Under the Condition of USP41-NF36, Dexamathasone Sodium Phosphate)



Conditions

System : GL7700 HPLC system
Column : Inertsil ODS-3 (7 μ m, 150 x 4.6 mm I.D.)
Column Cat. No. : 5020-
Eluent : Buffer*
Flow rate : 1.5 mL/min
Col. Temp. : 40 °C
Detection : UV 254 nm (UV7750 UV Detector)
Injection Vol. : 20 μ L
Sample : Standard

Analyte:

1. Dexamethasone Phosphate
 60 mg/L (1-a) or 2 mg/L (1-b)
 2. Dexamethasone 2 mg/L

Resolution (1-b, 2) : 8.0 (> 6.0)
 RSD of the peak area of
 1-a (%) (n=6) : 0.45 (< 2.0)

* Mix 520 mL of water with 2 mL of phosphoric acid. Adjust with sodium hydroxide to a pH of 2.6. Mix this solution with 36 mL of tetrahydrofuran and 364 mL of methanol.