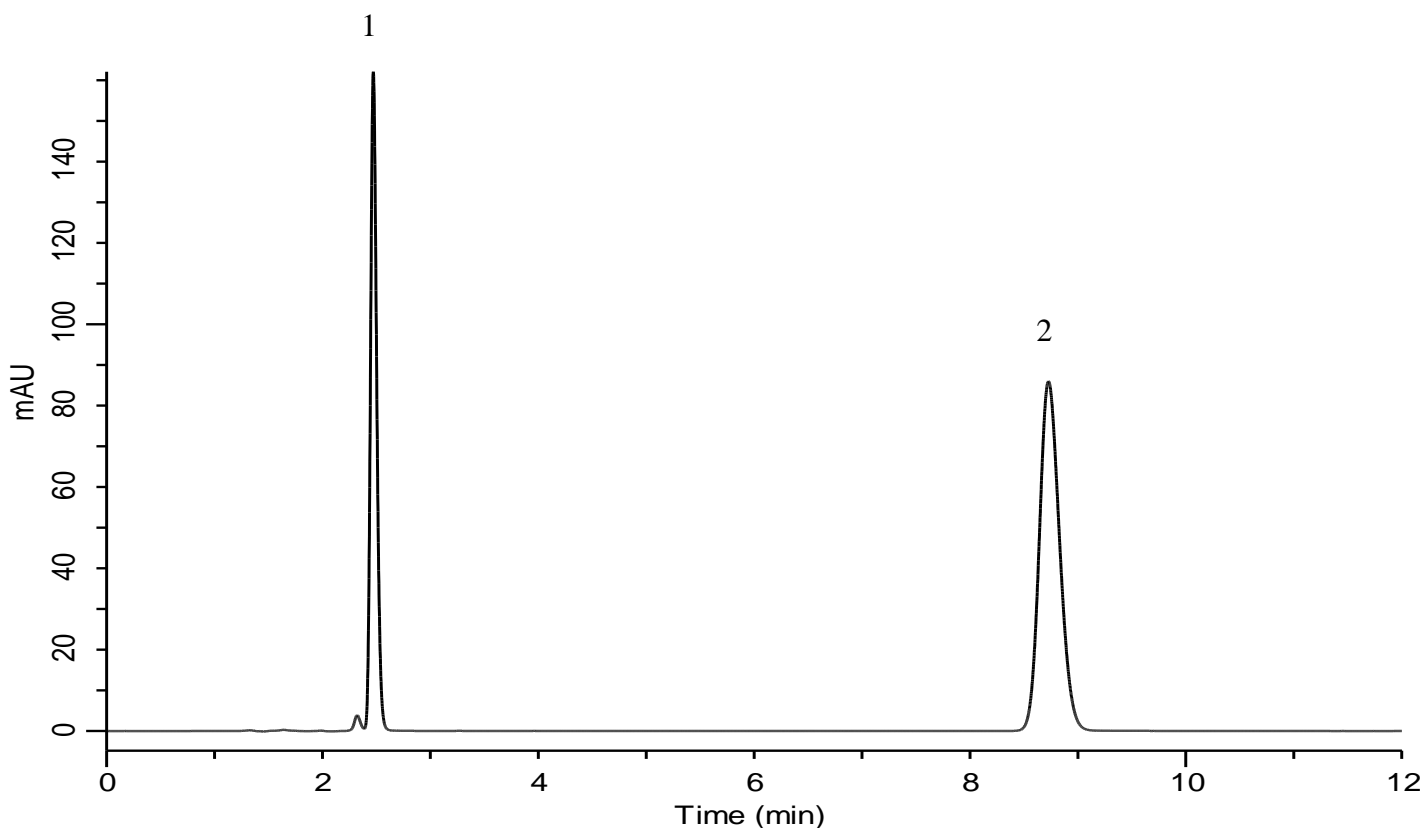


Analysis of Telmisartan and Hydrochlorothiazide

(Under the Condition of USP41-NF36, Telmisartan and Hydrochlorothiazide Tablets)

Standard solution of Dissolution Test 2



Conditions

System : GL7700 HPLC system
Column : InertSustain C18 (5 μ m, 250 x 4.6 mm I.D.)
Column Cat. No. : 5020-07346
Eluent : A) CH₃CN
 B) Buffer*
 A/B = 35/65
Flow rate : 1.5 mL/min
Col. Temp. : 40 °C
Detection : UV 270 nm (UV7750 UV Detector)
Injection Vol. : 20 μ L
Sample : Standard

Analyte:

1. Hydrochlorothiazide 13.9 mg/L
 2. Telmisartan 44.4 mg/L

Symmetry factor (1) : 1.20 (< 2.0)
 Symmetry factor (2) : 1.17 (< 2.0)
 Theoretical plates (1) : 8,611 (> 1,500)
 Theoretical plates (2) : 10,009 (> 1,500)
 RSD of the peak area of 1 (n=6) : 0.09 (< 2.0)
 RSD of the peak area of 2 (n=6) : 0.06 (< 2.0)

* Dissolve 2.72 g of monobasic potassium phosphate in 1 L of water. Add 2 mL of triethylamine per liter of solution and adjust with phosphoric acid to a pH of 2.4.