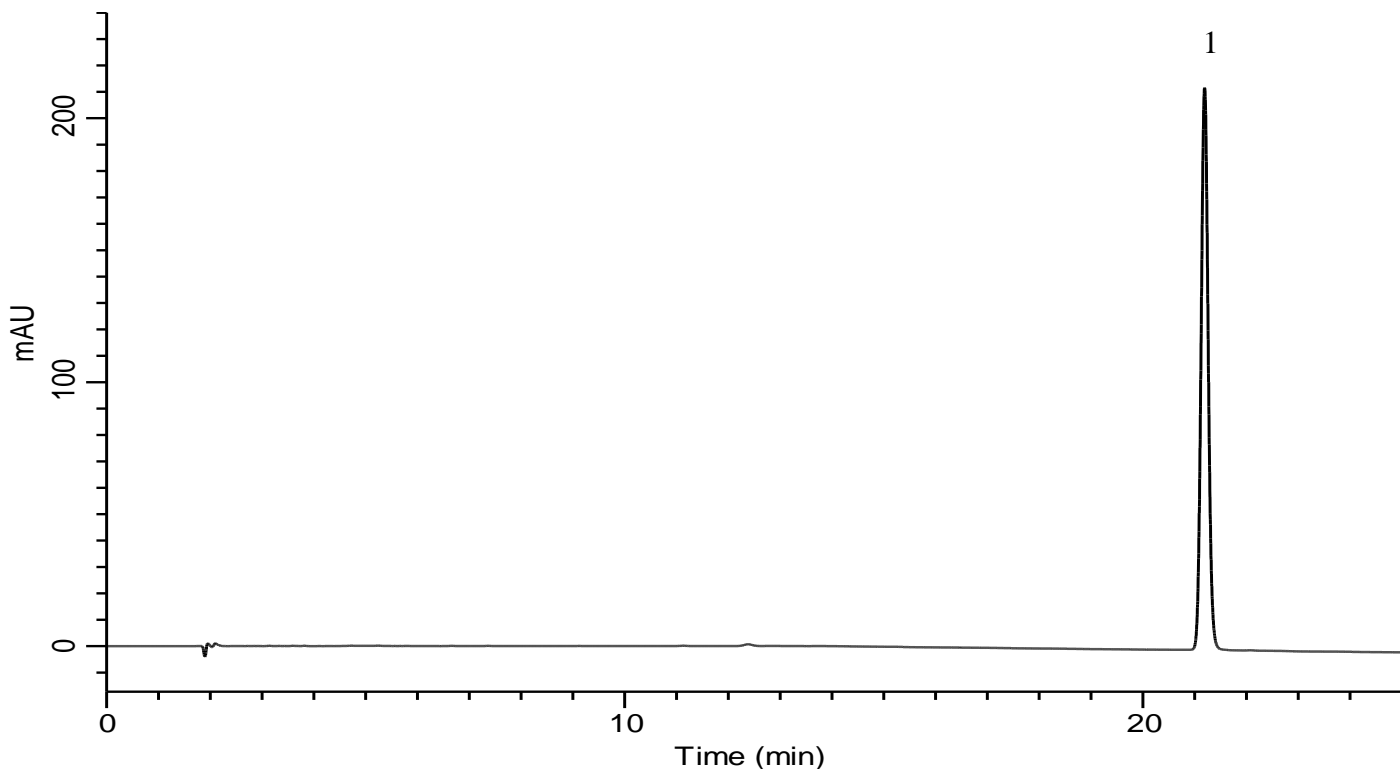


# Analysis of Cinacalcet Hydrochloride

(Under the Condition of draft for USP)

## Standard solution of Assay



### Conditions

**System** : GL7700 HPLC system  
**Column** : InertSustainSwift C18 (3 μm HP, 250 x 4.6 mm I.D.)  
**Column Cat. No.** : 5020-88226  
**Eluent** : A) CH<sub>3</sub>CN  
 B) CH<sub>3</sub>CN/Buffer\* = 45/55, v/v

**Analyte:**  
 1. Cinacalcet 20 mg/L

Time(min)	A (vol%)	B (vol%)
0	0	100
10	0	100
20	30	70
25	40	60

Symmetry factor (1) : 1.07 (< 1.5)  
 RSD of the peak area of 1 (%) (n=6) : 0.16 (< 0.73)

**Flow rate** : 1.3 mL/min  
**Col. Temp.** : 40 °C  
**Detection** : UV 210 nm (UV7750 UV Detector)  
**Injection Vol.** : 20 μL  
**Sample** : Standard

\* 0.02 M monobasic potassium phosphate. Adjust with 2 N potassium hydroxide to a pH of 6.2.