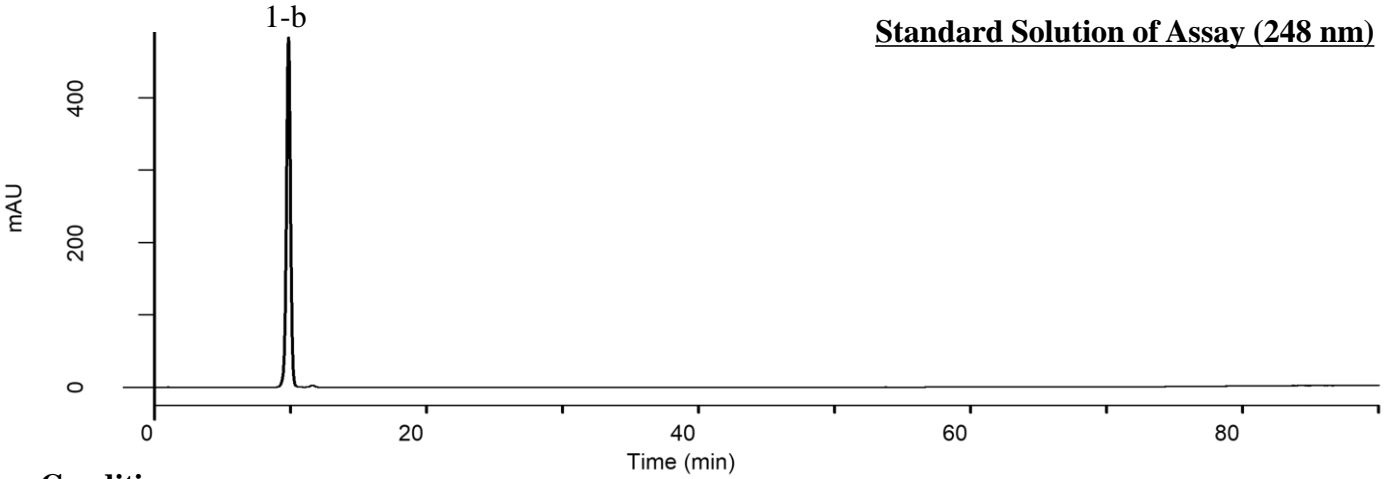
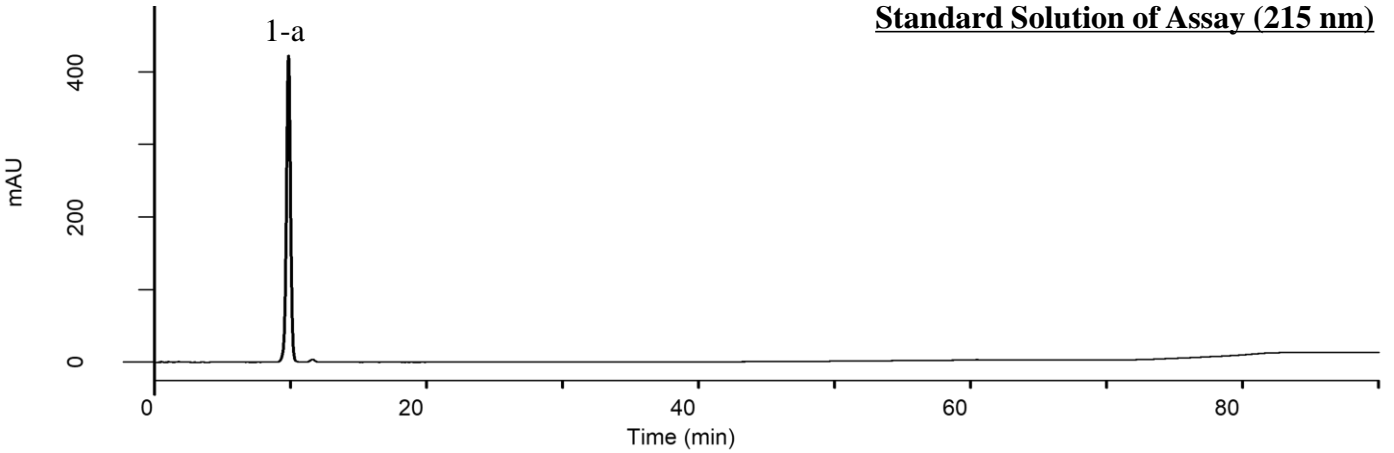


# Analysis of Ezetimibe

(Under the Condition of USP41-NF36, Ezetimibe)



**Conditions**

**System** : GL7700 HPLC system  
**Column** : InertSustain PFP (5 μm, 150 x 4.6 mm I.D.)  
**Column Cat. No.** : 5020-87730  
**Eluent** : A) CH<sub>3</sub>CN  
 B) CH<sub>3</sub>OH  
 C) H<sub>2</sub>O

**Analyte:**

1. Ezetimibe 250 mg/L

Symmetry factor (1-b) : 0.95 (< 1.5)  
 RSD of the peak area of 1-b (%)(n=6) : 0.24 (< 0.73)

Time(min)	A(vol%)	B(vol%)	C(vol%)
0	27	10	63
37	27	10	63
60	50	10	40
70	50	10	40
80	80	10	10
90	80	10	10
90.1	27	10	63
100	27	10	63

**Flow rate** : 2.0 mL/min  
**Col. Temp.** : 40 °C  
**Detection** : UV 215 nm and 248 nm (PD7752 PDA Detector)  
**Injection Vol.** : 60 μL  
**Sample** : Standard