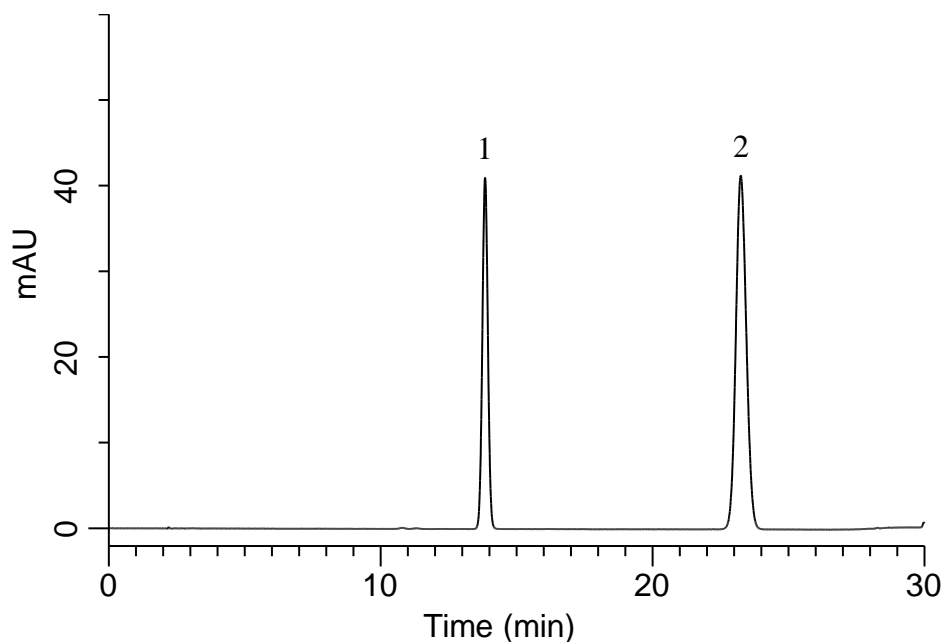


Analysis of Advantame

(Under the Condition of the JSFA-IX (Japanese Standards of Food Additives))



Conditions

System : GL7700 HPLC system

Column : InertSustain AQ-C18
(5 μ m, 250 x 4.6 mm I.D.)

Column Cat. No. : 5020-89731

Eluent : A) 100 mM KH_2PO_4 in H_2O (pH 2.8, H_3PO_4)/ CH_3CN = 75/25, v/v
B) 100 mM KH_2PO_4 in H_2O (pH 2.8, H_3PO_4)/ CH_3CN = 50/50, v/v

Time (min)	A (vol%)	B (vol%)
0.0	100	0
20.0	100	0
25.0	0	100
30.0	0	100

Flow Rate : 1.0 mL/min

Col. Temp. : 40 °C

Detection : UV 280 nm (PD7752 PDA Detector)

Injection Vol. : 20 μ L

Sample : Standard

Analyte:

1. Benzoic acid 80 mg/L
2. Advantame 160 mg/L