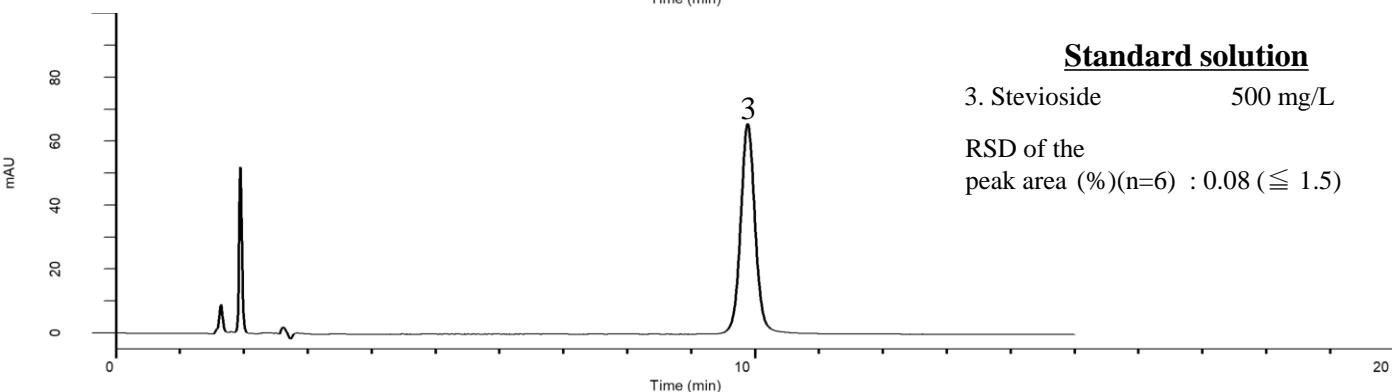
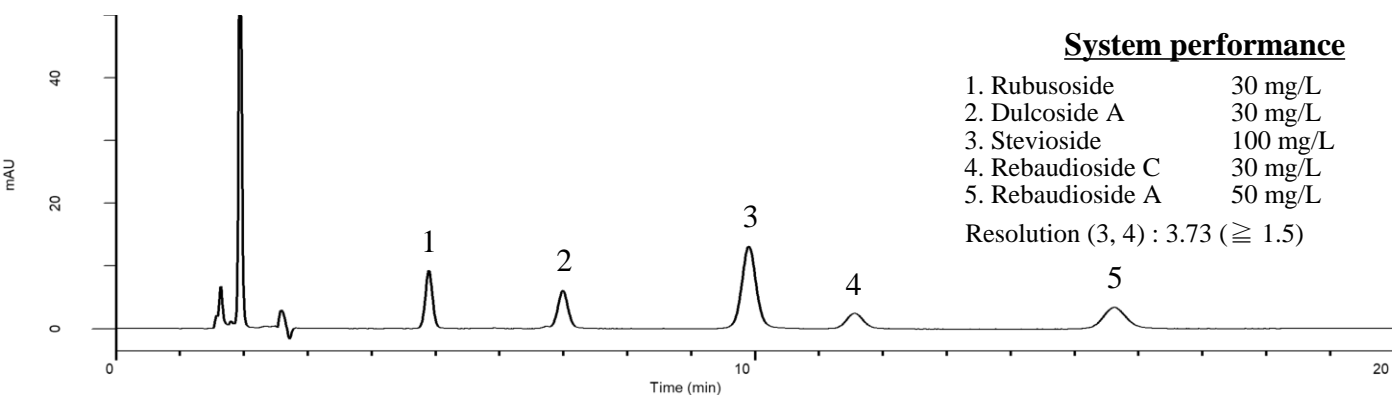


## Analysis of Steviol glycosides

(Under the Condition of the JPE (Japanese Pharmaceutical Excipients),  
Purified Stevia Extract Assay)



### Conditions

**System** : GL7700 HPLC system  
**Column** : Inertsil NH2  
 (5  $\mu$  m, 250 x 4.6 mm I.D.)  
**Column Cat. No.** : 5020-05546  
**Eluent** : A) CH<sub>3</sub>CN  
 B) H<sub>2</sub>O  
 A/B = 4/1, v/v  
**Flow Rate** : 1.4 mL/min  
**Col. Temp.** : 35 °C  
**Detection** : UV 213 nm (PD7752 PDA Detector)  
**Injection Vol.** : 20  $\mu$  L  
**Sample** : Standard

### Analyte:

1. Rubusoside
2. Dulcoside A
3. Stevioside
4. Rebaudioside C
5. Rebaudioside A