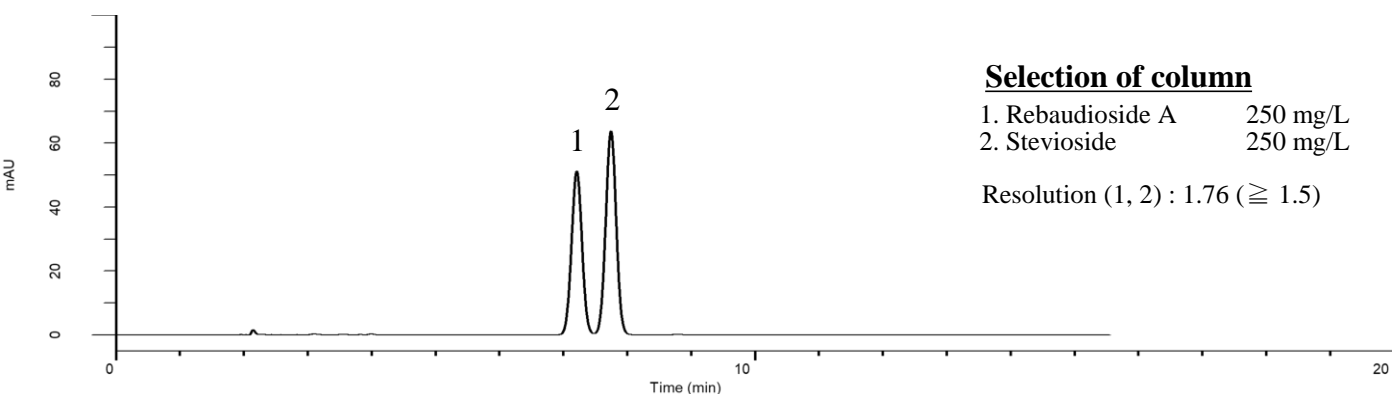
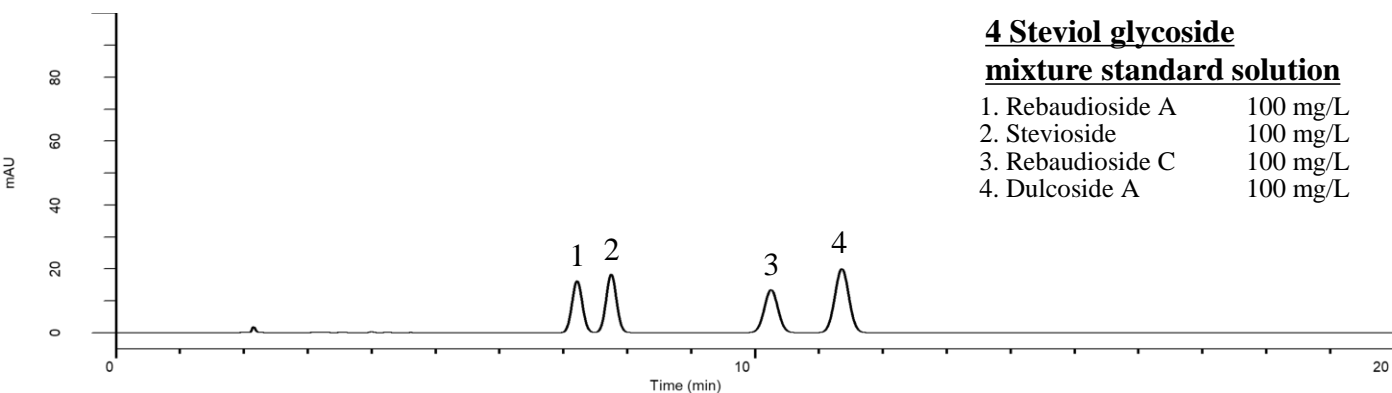


Analysis of Steviol glycosides

(Under the Condition of the JSFA-IX (Japanese Standards of Food Additives),
Stevia Extract)



Conditions

System : GL7700 HPLC system
Column : Inertsil ODS-HL
 (5 μ m, 250 x 4.6 mm I.D.)
Column Cat. No. : 5020-87132
Eluent : A) CH₃CN
 B) 0.01 M Phosphate buffer in H₂O (pH 2.6)*
 A/B = 8/17, v/v
Flow Rate : 1.0 mL/min
Col. Temp. : 40 °C
Detection : UV 210 nm (UV7751 UV Detector)
Injection Vol. : 10 μ L
Sample : Standard

Analyte:

1. Rebaudioside A
 2. Stevioside
 3. Rebaudioside C
 4. Dulcoside A

*Dissolve 1.56 g of sodium dihydrogenphosphate dihydrate in 1000 mL of water (Solution A).
 Dissolve 1.15 g of phosphoric acid in 1000 mL of water (Solution B).
 Mix together equal parts of Solution A and Solution B.