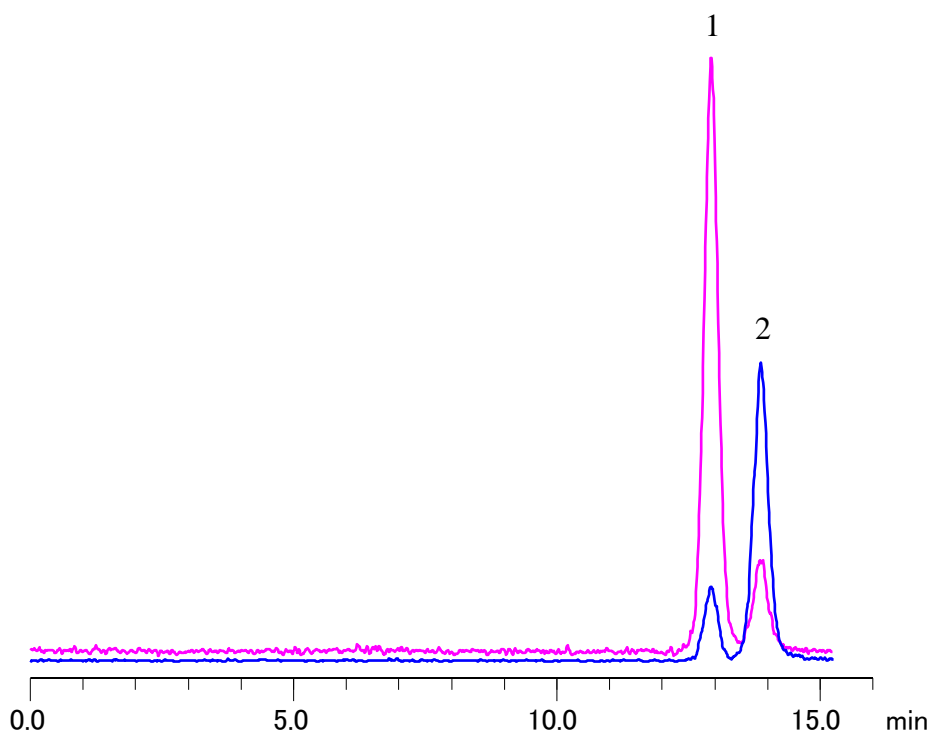


## Analysis of Acetyldeoxynivalenol (AcDON)



### Conditions

<b>Column</b>	: InertSustain PFP (3 $\mu$ m, 150 x 2.1 mm I.D., Metal-free hardware)	<b>Analyte:</b>	1. 15-Acetyldeoxynivalenol (15-AcDON) 1 mg/L
<b>Column Cat. No.</b>	: 5020-87594		2. 3-Acetyldeoxynivalenol (3-AcDON) 1 mg/L
<b>Eluent</b>	: A) CH <sub>3</sub> OH B) 0.1% HCOOH in H <sub>2</sub> O A/B = 15/85, v/v		
<b>Flow rate</b>	: 0.2 mL/min		
<b>Col. Temp.</b>	: 40 °C		
<b>Detection</b>	: LC/MS/MS (LCMS8030 Plus System, ESI, Positive, SRM)		
<b>Injection Vol.</b>	: 1 $\mu$ L		
<b>Sample</b>	: Standard		