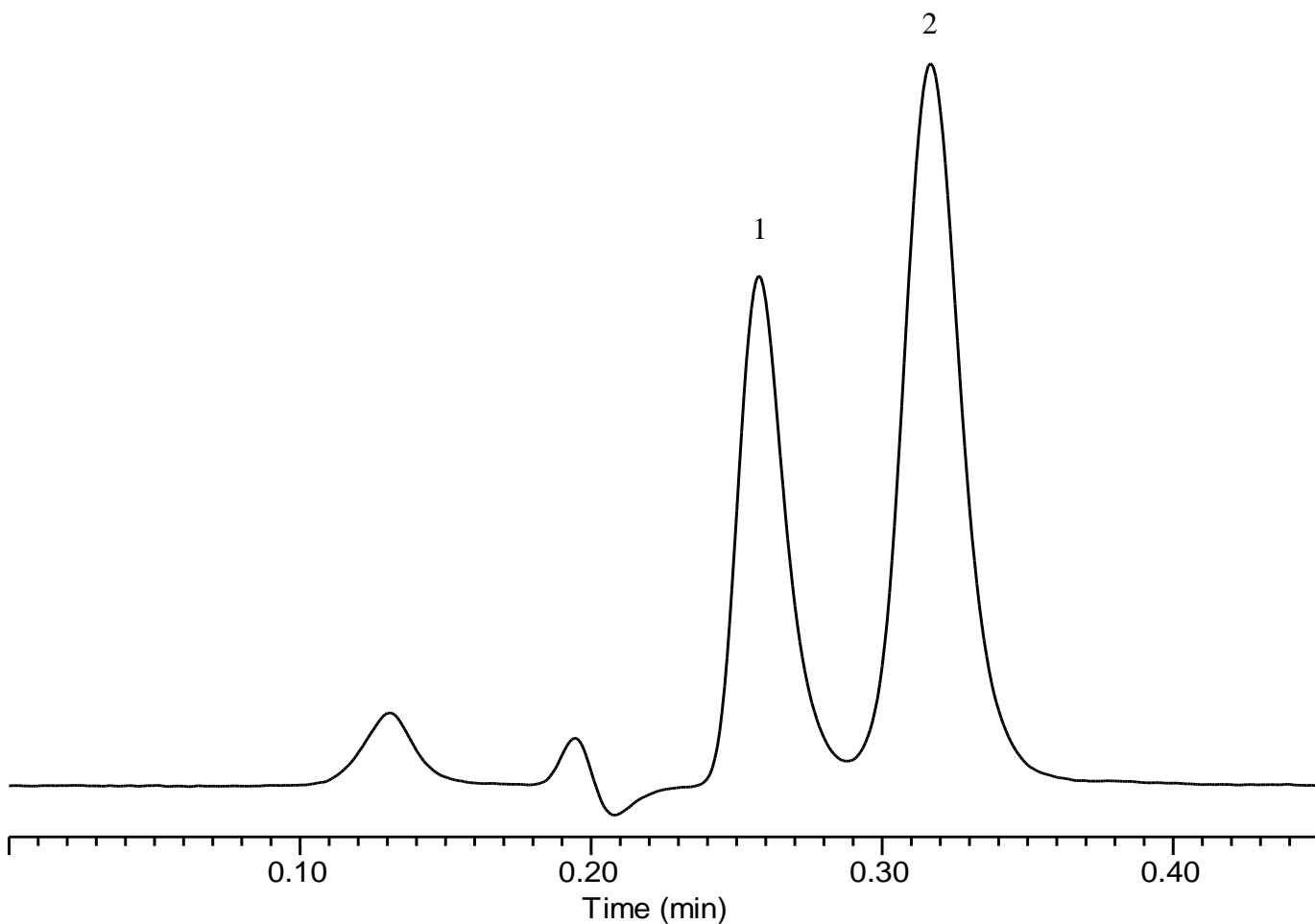


Analysis of Acephate and Methamidophos



Conditions

Column : MonoSelect C18 for HTS (20 x 2.1 mm I.D.)

Column Cat. No. : 5020-10811

Eluent : A) CH₃CN
 B) H₂O
 A/B = 5/95, v/v

Flow rate : 0.3 mL/min

Col. Temp. : 40 °C

Detection : UV 215 nm

Injection Vol. : 1 μL

Sample : Standard

Analyte:

1. Methamidophos	100 mg/L
2. Acephate	100 mg/L

* An LC system optimized for high-throughput analysis was used.