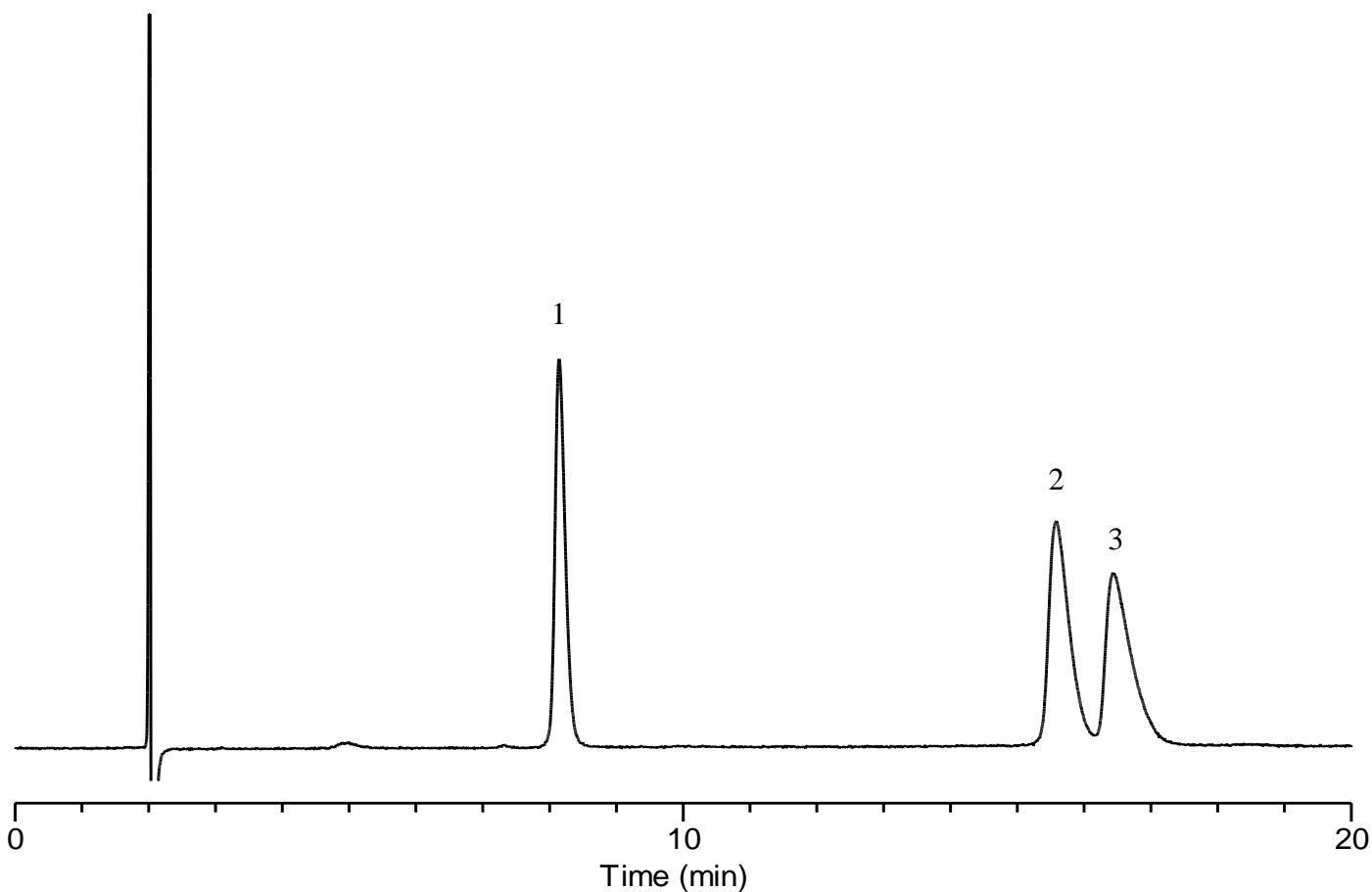


Analysis of Methylhippuric acids



Conditions

Column : InertSustain Cyano HP (3 μ m, 150 x 4.6 mm I.D.)
Column Cat. No. : 5020-89475
Eluent : A) CH₃CN
 : B) 0.1% HCOOH in H₂O
 : A/B = 1/99, v/v

Flow rate : 1.0 mL/min
Col. Temp. : 40 °C
Detection : UV 220 nm
Injection Vol. : 1 μ L
Sample : Standard

Analyte:

1. *o*-Methylhippuric acid 100 mg/L
 2. *p*-Methylhippuric acid 100 mg/L
 3. *m*-Methylhippuric acid 100 mg/L