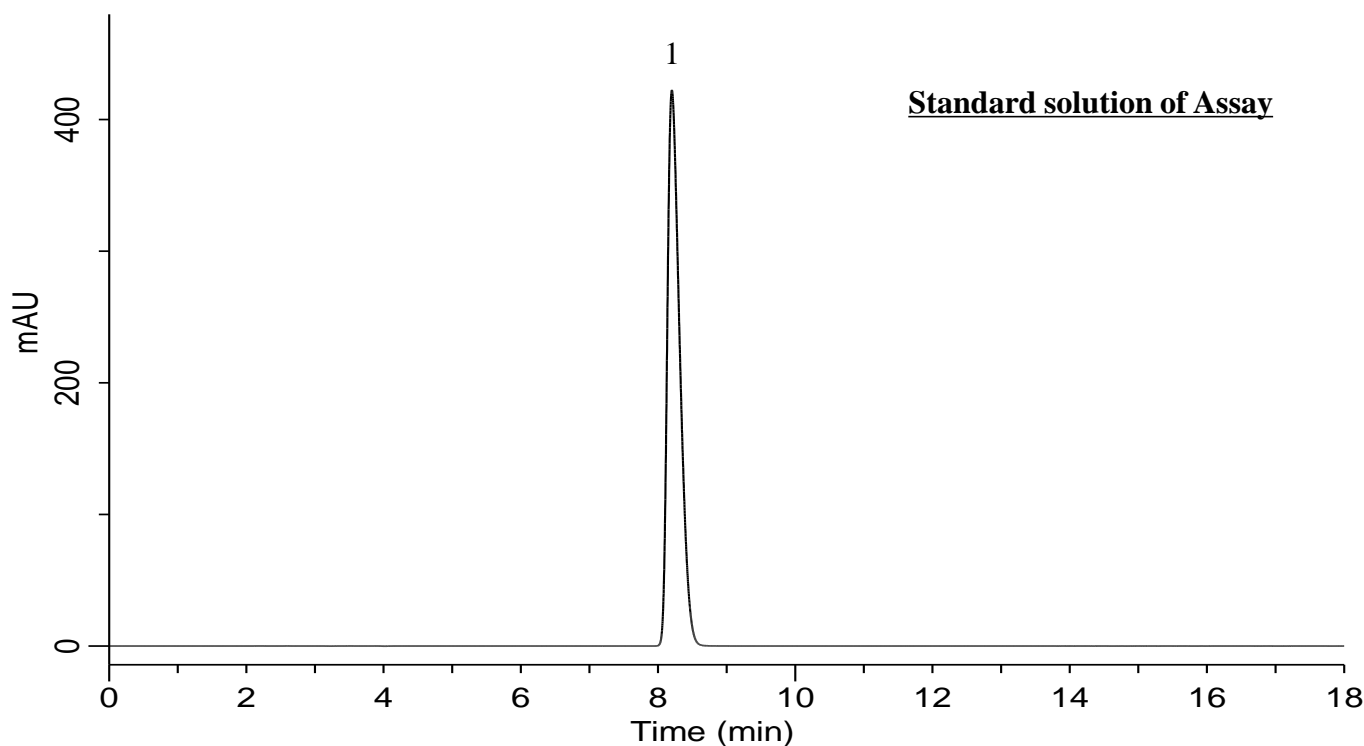


Analysis of Venlafaxine hydrochloride

(Under the Condition of USP41-NF36, Venlafaxine Hydrochloride Extended-Release Capsules)



Conditions

Column : InertSustain C18 (5 μ m, 250 x 4.6 mm I.D.)
Column Cat. No. : 5020-07346
Eluent : CH₃CN/ TEA/ H₂O = 250/4/750*
Flow rate : 1.0 mL/min
Col. Temp. : 30 °C
Detection : UV 226 nm (UV7750 UV Detector)
Injection Vol. : 10 μ L
Sample : Standard

*Adjust with phosphoric acid to a pH of 3.5.

Analyte:

1. Venlafaxine hydrochloride 0.25 mg/mL

Symmetry factor of (1) : 1.55(< 2.0)

RSD of the peak area of 1 (%) (n=6)

: 0.04(< 1.5)