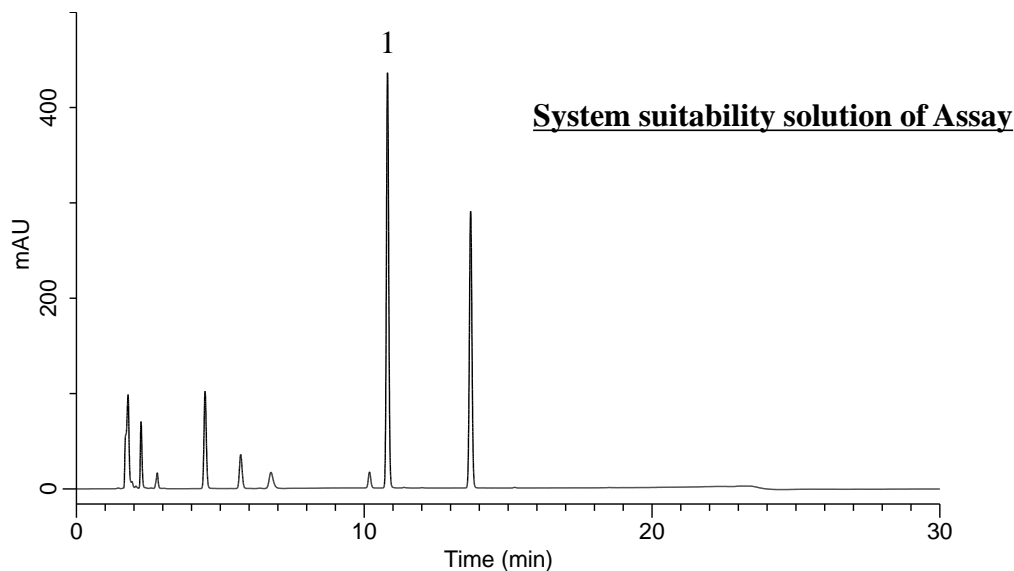


Analysis of Levetiracetam

(Under the Condition of draft for USP)



Conditions

System : GL7700 HPLC system
Column : InertSustain AQ-C18
 (3 μ mHP, 150 x 4.6 mm I.D.)
Column Cat. No. : 5020-89936
Eluent : A) CH₃CN
 B) CH₃CN/Buffer* = 1/19, v/v

Time (min)	A (vol%)	B (vol%)
0.0	0	100
3.0	0	100
20.0	29	71

Flow rate : 0.9 mL/min
Col. Temp. : 40 °C
Detection : UV 205 nm (UV7751 UV Detector)
Injection Vol. : 10 μ L
Sample : Standard

Analyte:

1. Levetiracetam

RSD of the peak area (%)(n=6)

: 0.08 (\leq 1.0)

* 2.7 g/L of monobasic potassium phosphate in water.
 Adjust with 2% aqueous potassium hydroxide (w/v) to a pH of 5.5.