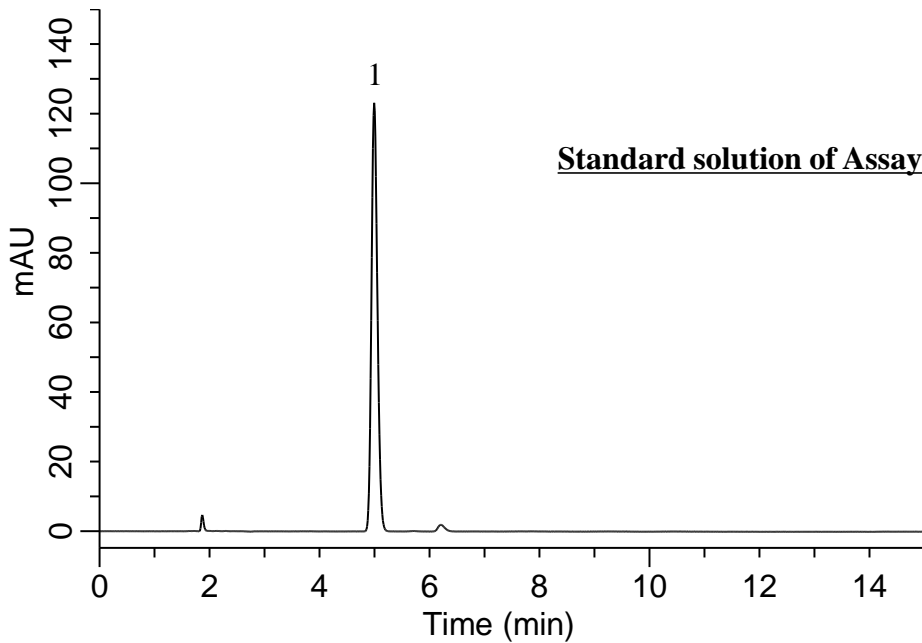


## Analysis of Levetiracetam

(Under the Condition of USP42-NF37 1S, Levetiracetam Extended-Release Tablets)



### Conditions

**System** : GL7700 HPLC system  
**Column** : InertSustain C8  
 (5  $\mu$  m, 250 x 4.6 mm I.D.)  
**Column Cat. No.** : 5020-16028  
**Eluent** : A) CH<sub>3</sub>CN  
 B) Buffer\*  
 A/B = 10/90, v/v  
**Flow rate** : 1.5 mL/min  
**Col. Temp.** : 30 °C  
**Detection** : UV 205 nm (PD7752 PDA Detector)  
**Injection Vol.** : 10  $\mu$  L  
**Sample** : Standard

### Analyte:

1. Levetiracetam 80 mg/L

Symmetry factor (1) : 1.17 ( $\leq$  2.0)

RSD of the peak area of 1 (%) (n=6)

: 0.06 ( $\leq$  2.0)

\*1.4 g/L of anhydrous dibasic sodium phosphate in water. Adjust with phosphoric acid to a pH of 3.5.