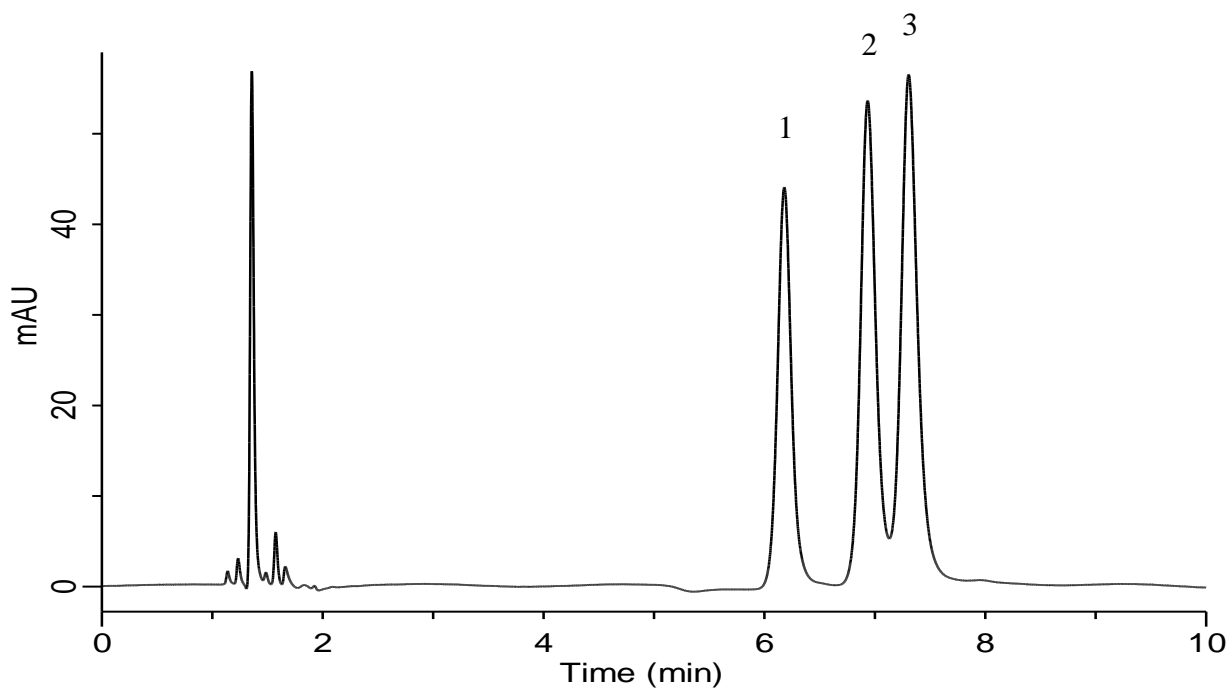


Analysis of Methylhippuric acids



Conditions

Column : InertSustain Amide
 (1.9 μ m, 150 x 2.1 mm I.D.)
Column Cat. No. : 5020-88819
Eluent : A) CH₃CN
 B) 10 mM HCOONH₄ + 0.1% HCOOH in H₂O
 A/B = 95/5, v/v
Flow rate : 0.3 mL/min
Col. Temp. : 40 °C
Detection : UV 225 nm
Injection Vol. : 0.5 μ L
Sample : Standard

Analyte:

1. *o*-Methylhippuric acid 500 mg/L
 2. *m*-Methylhippuric acid 500 mg/L
 3. *p*-Methylhippuric acid 500 mg/L