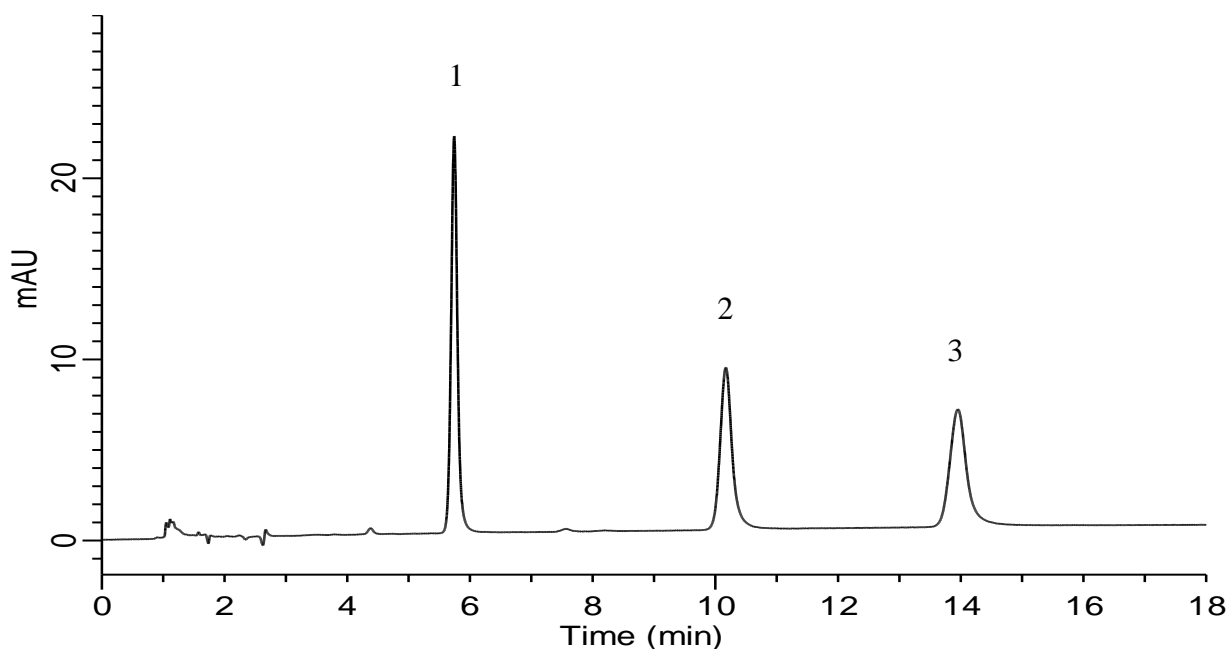


Analysis of CTP and its related compounds



Conditions

Column : InertSustain Amide
 (1.9 μ m, 150 x 2.1 mm I.D., Metal-free hardware)
Column Cat. No. : 5020-
Eluent : A) CH₃CN
 B) H₂O
 C) HCOOH
 D) Diethylenetriamine
 A/B/C/D = 70/30/0.2/0.2, v/v/v/v
Flow rate : 0.3 mL/min
Col. Temp. : 40 °C
Detection : UV 254 nm
Injection Vol. : 0.5 μ L
Sample : Standard

Analyte:

1. Cytidine monophosphate (CMP) 100 mg/L
 2. Cytidine diphosphate (CDP) 100 mg/L
 3. Cytidine triphosphate (CTP) 100 mg/L