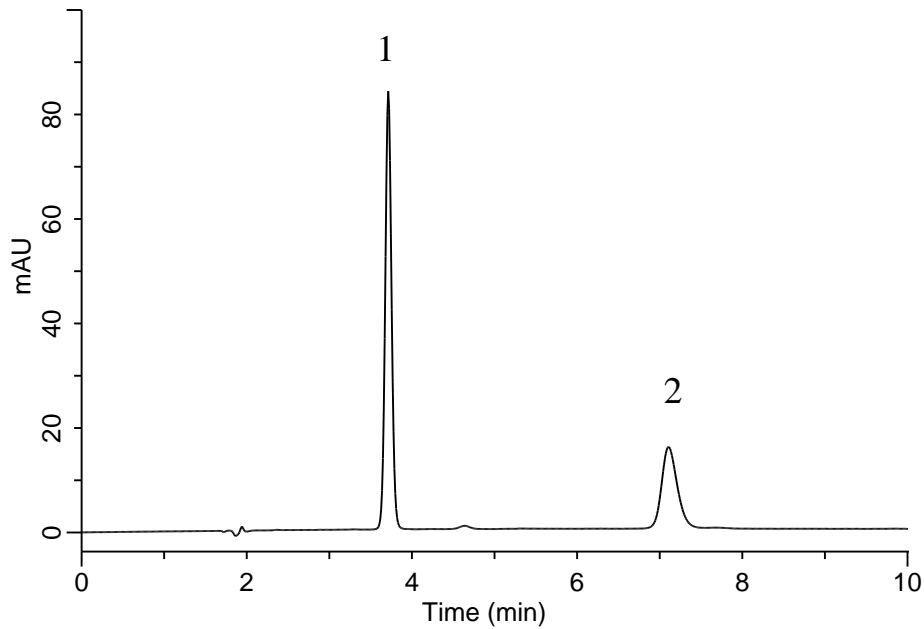


Analysis of Chlorogenic acid



Conditions

System : Chromaster HPLC system
Column : InertSustain AX-C18
 (5 μ m, 150 x 4.6 mm I.D.)
Column Cat. No. : 5020-91014
Eluent : A) CH₃OH
 B) 50 mM KH₂PO₄ in H₂O (pH 2.3, H₃PO₄)
 A/B = 30/70, v/v
Flow Rate : 1.0 mL/min
Col. Temp. : 40 °C
Detection : UV 280 nm
Injection Vol. : 10 μ L
Sample : Standard

Analyte:

1. Caffeine 20 mg/L
 2. Chlorogenic acid 20 mg/L