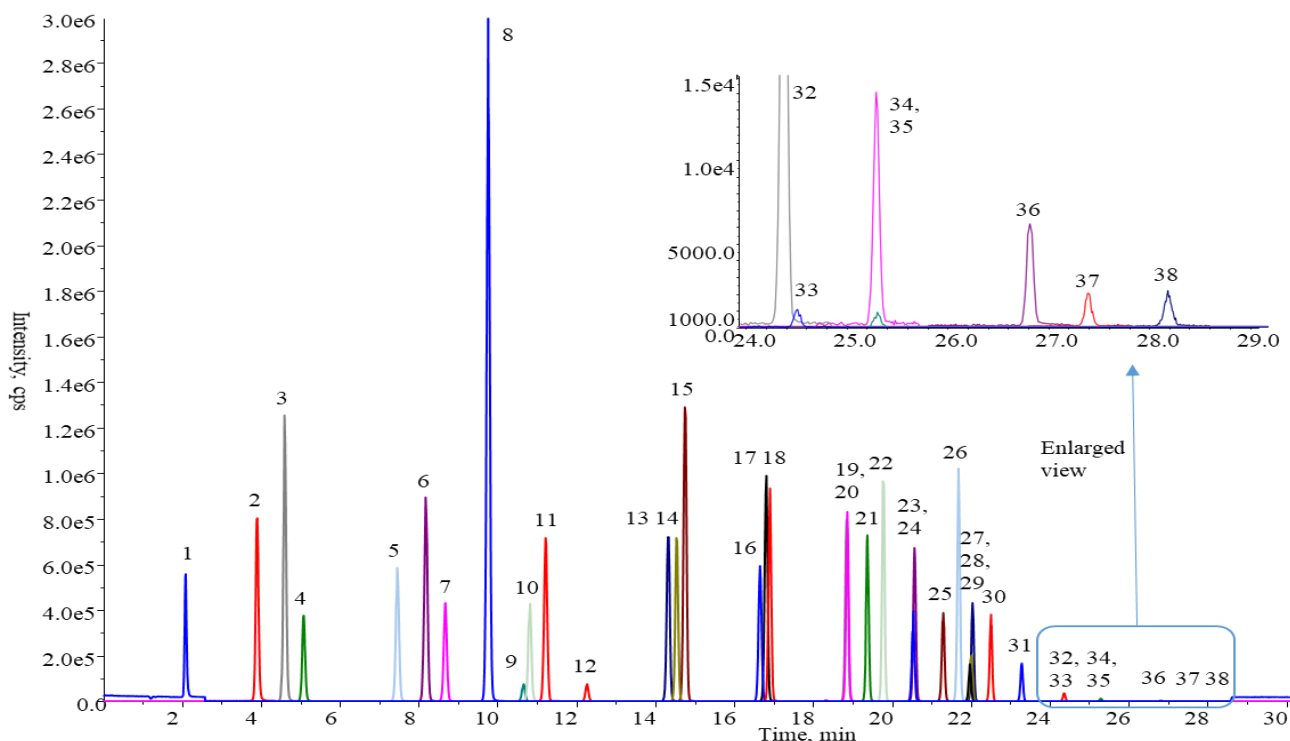


## Analysis of Per - and Polyfluoroalkyl Substances (PFAS)



### Conditions

- System** : Exion HPLC System (SCIEX)  
QTRAP 6500+ LC-MS/MS System (SCIEX)
- Column** : InertSustain C18 HP (3 μm 150 x 2.1 mm I.D.) (GL Sciences Inc.)
- Column Cat. No.** : 5020-14415
- Delay Column** : Delay Column for PFAS (30 x 3.0 mm I.D.) (GL Sciences Inc.)
- Delay Column Cat. No.** : 5020-90005
- Eluent** : A) CH<sub>3</sub>OH  
B) 20 mmol/L CH<sub>3</sub>COONH<sub>4</sub> in H<sub>2</sub>O

Time (min)	A%	B%
0	40	60
1.0	40	60
25.0	90	10
32.0	90	10
32.1	40	60
37.0	40	60

- Flow Rate** : 0.25 mL/min
- Col. Temp.** : 40 °C
- Detection** : LC/MS/MS (ESI, Negative, SRM)  
CUR CAD IS TEM GS1 GS2  
40 12 -4500 300 50 30
- Injection Vol.** : 2 μL
- Sample** : Standard in Methanol (1 ng/mL each)

No.	Compound	R.T.	Transition 1			Transition 2		
			Q1	Q3	CE	Q1	Q3	CE
1	PFPrA	2.1	163	119	-16			
2	PFBA	3.9	213	169	-14			
3	PFPrS	4.6	249	80	-52	249	99	-34
4	PFMBA	5.1	229	85	-16			
5	PFPeA	7.5	263	219	-11			
6	PFBS	8.2	299	80	-59	299	99	-44
7	PFMPA	8.7	279	85	-14			
8	PFEESA	9.8	315	135	-30	315	83	-24
9	NFDHA	10.7	295	201	-12	295	85	-30
10	4:2 FTSA	10.8	327	307	-28	327	81	-54
11	PFHxA	11.2	313	269	-15	313	119	-30
12	HFPO-DA(GenX)	12.3	329	169	-16	329	285	-8
13	PFHpA	14.3	363	319	-14	363	169	-26
14	PFHxS	14.5	399	80	-80	399	99	-80
15	ADONA(DONA)	14.7	377	251	-14	377	85	-56
16	6:2 FTSA	16.6	427	407	-32	427	81	-72
17	PFOA	16.8	413	369	-14	413	169	-26
18	PFHpS	16.9	449	80	-104	449	99	-70
19	PFNA	18.8	463	419	-16	463	219	-26
20	PFOS	18.9	499	80	-97	499	99	-77
21	8:2 FTUCA	19.4	457	393	-18	457	343	-52
22	9CI-PF3ONS	19.8	531	351	-40	531	83	-56
23	8:2 FTSA	20.5	527	507	-40	527	81	-82
24	PFDA	20.6	513	469	-19	513	219	-27
25	N-MeFOSAA	21.3	570	419	-28	570	483	-22
26	FOSA(PFOSA)	21.7	498	78	-85	498	169	-40
27	PFDS	22.0	599	80	-94	599	99	-91
28	PFUnDA(PFUnA)	22.0	563	519	-19	563	269	-28
29	N-EtFOSAA	22.0	584	419	-28	584	526	-22
30	10:2 FTUCA	22.5	557	493	-20	557	243	-52
31	PFDoDA(PFDoA)	23.3	613	569	-17	613	269	-29
32	PFTTrDA(PFTTrA)	24.4	663	619	-19	663	269	-32
33	N-MeFOSA	24.5	512	169	-37	512	219	-34
34	N-EtFOSA	25.3	526	169	-37	526	219	-34
35	PFTeDA(PFTeA)	25.3	713	669	-19	713	319	-36
36	PFHxDA	26.8	813	769	-20	813	319	-34
37	8:2 diPAP	27.4	989	97	-88	989	543	-35
38	PFOcDA(PFODA)	28.2	913	869	-20	913	369	-40