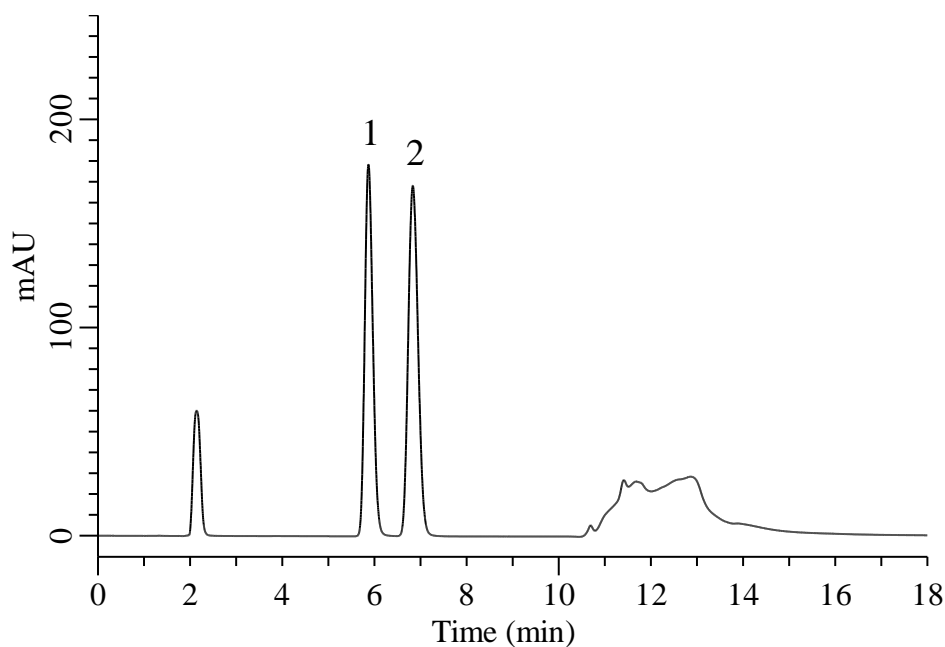


Analysis of Saccharin

(Under the Condition of the Japanese Pharmacopoeia 18th, Saccharin Sodium Hydrate)



Conditions

System : Primaide HPLC system (HITACHI)
Column : Inertsil WP300 C18 (GL Sciences Inc.)
 (3.5 μ m, 150 x 4.6 mm I.D.)
Column Cat. No. : 5020-90658
Eluent : A) CH₃OH
 B) 50 mM K₂HPO₄ in (0.1% H₃PO₄ in H₂O)

Analyte:

1. Phthalic anhydride 0.1 mg/mL
 2. Saccharin 0.1 mg/mL

Resolution (1, 2) : 2.82 (≥ 1.5)
 Symmetry factor (2) : 1.14 (≤ 1.5)

Time (min)	A (vol%)	B (vol%)
0.0	10	90
7.0	10	90
8.0	95	5
10.0	95	5
10.1	10	90
18.0	10	90

Flow Rate : 1.0 mL/min
Col. Temp. : 20 °C
Detection : UV 230 nm
Injection Vol. : 10 μ L
Sample : Standard