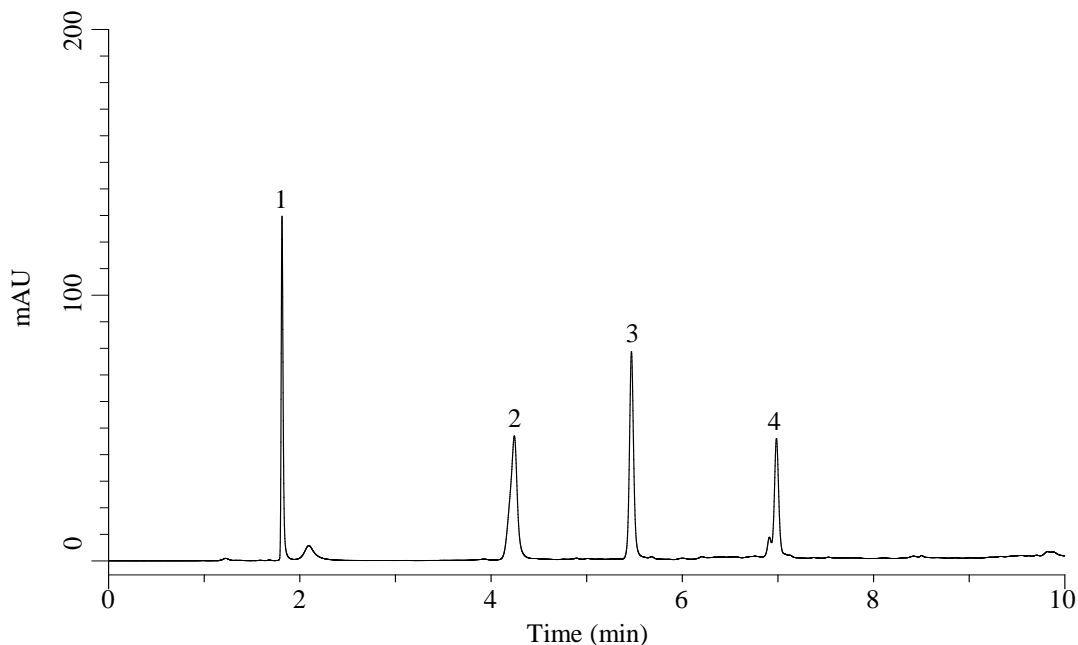


Analysis of Tryptophan metabolites



Conditions

Column : InertSustain AX-C18 (GL Sciences Inc.)
 (3 μ m, 150 x 2.1 mm I.D., Metal-free hardware)

Column Cat. No. : 5020-91059

Eluent : A) (10 mM HCOONH₄ + 0.1% HCOOH)
 in (CH₃CN/H₂O =90/10, v/v)
 B) (10 mM HCOONH₄ + 0.1% HCOOH) in H₂O

Analyte:

1. Serotonin (5HT)
2. 5-Hydroxy-L-Tryptophan
3. Tryptophan
4. 5-Hydroxyindoleacetic acid (5-HIAA)
 (100 mg/L each)

Time (min)	A (Vol%)	B (Vol%)
0.0	1	99
10.0	50	50

Flow Rate : 0.3 mL/min

Col. Temp. : 40 °C

Detection : UV 280 nm

Injection Vol. : 1 μ L

Sample : Standard