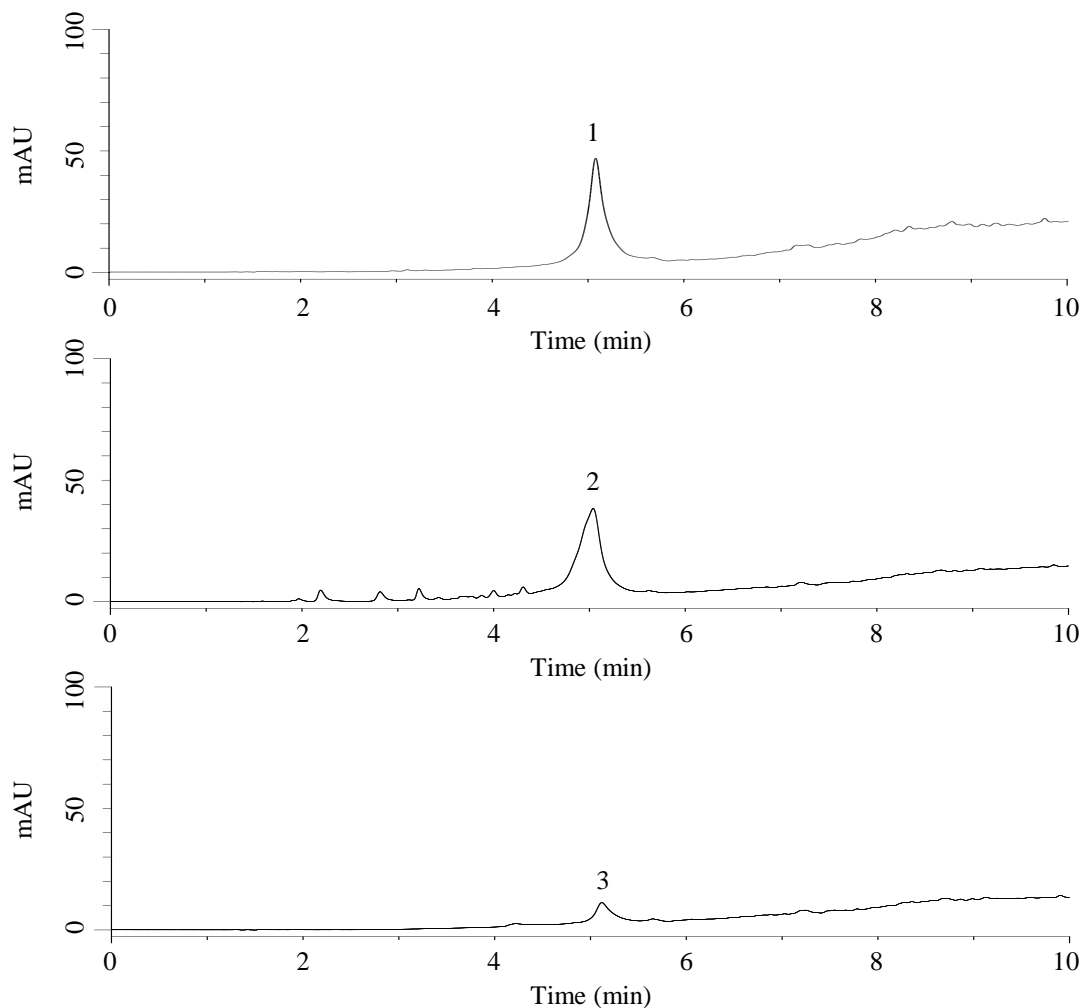


## Analysis of Chondroitin Sulfate



### Conditions

**Column** : InertSustain AX-C18 (GL Sciences Inc.)  
 (3  $\mu$  m, 150 x 2.1 mm I.D., Metal-free hardware)  
**Column Cat. No.** : 5020-91059  
**Eluent** : A) 200 mM HCOONH<sub>4</sub> in CH<sub>3</sub>OH  
 B) 10 mM HCOONH<sub>4</sub> in H<sub>2</sub>O

Time (min)	A (Vol%)	B (Vol%)
0.0	10	90
5.0	100	0
10.0	100	0

**Flow Rate** : 0.3 mL/min  
**Col. Temp.** : 40 °C  
**Detection** : UV 254 nm  
**Injection Vol.** : 2  $\mu$  L  
**Sample** : Standard

### Analyte:

1. Chondroitin Sulfate A Sodium Salt, from Bovine trachea
2. Chondroitin Sulfate B Sodium Salt, from Porcine Skin
3. Chondroitin Sulfate C Sodium Salt (2,000 mg/L each)