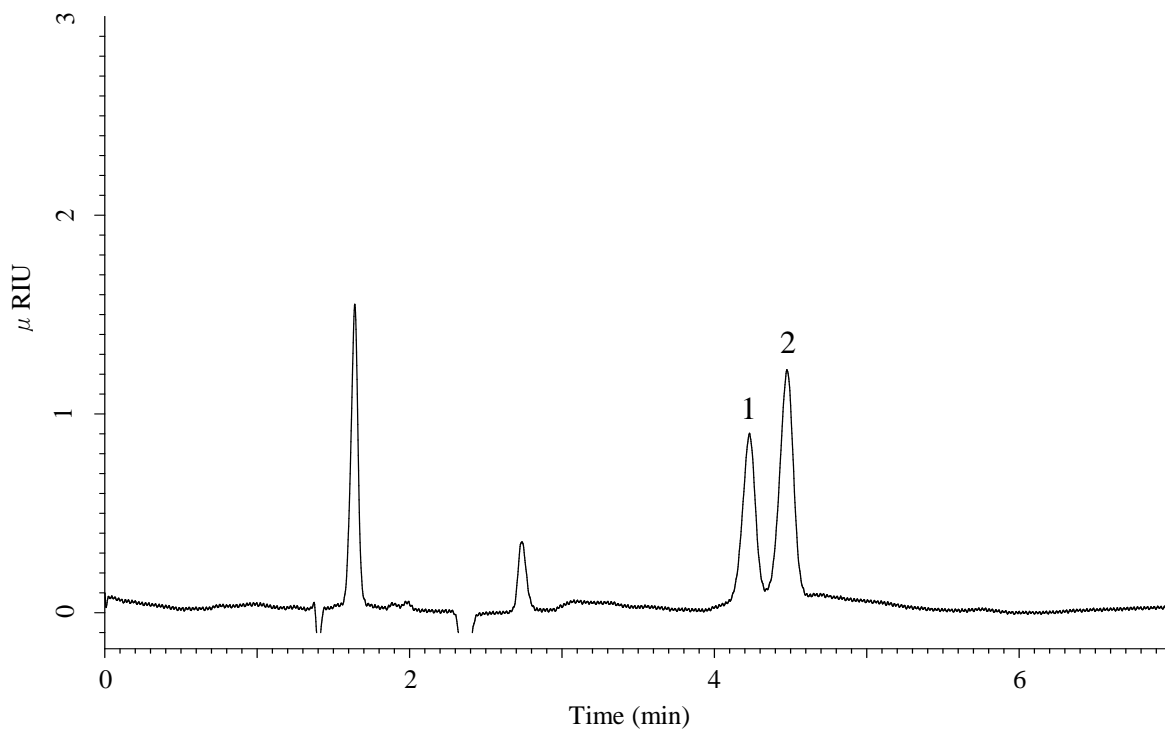


## Analysis of Sugar phosphates



### Conditions

**Column** : InertSustain AX-C18 (GL Sciences Inc.)  
 (3  $\mu$  m, 150 x 4.6 mm I.D.)  
**Column Cat. No.** : 5020-91051  
**Eluent** : (10 mM HCOONH<sub>4</sub> + 0.1% HCOOH) in H<sub>2</sub>O  
**Flow Rate** : 1.0 mL/min  
**Col. Temp.** : 40 °C  
**Detection** : RI  
**Injection Vol.** : 5  $\mu$  L  
**Sample** : Standard

### Analyte:

1. Glucose-1-phosphate  
 2. Glucose-6-phosphate  
 (2,500 mg/L each)