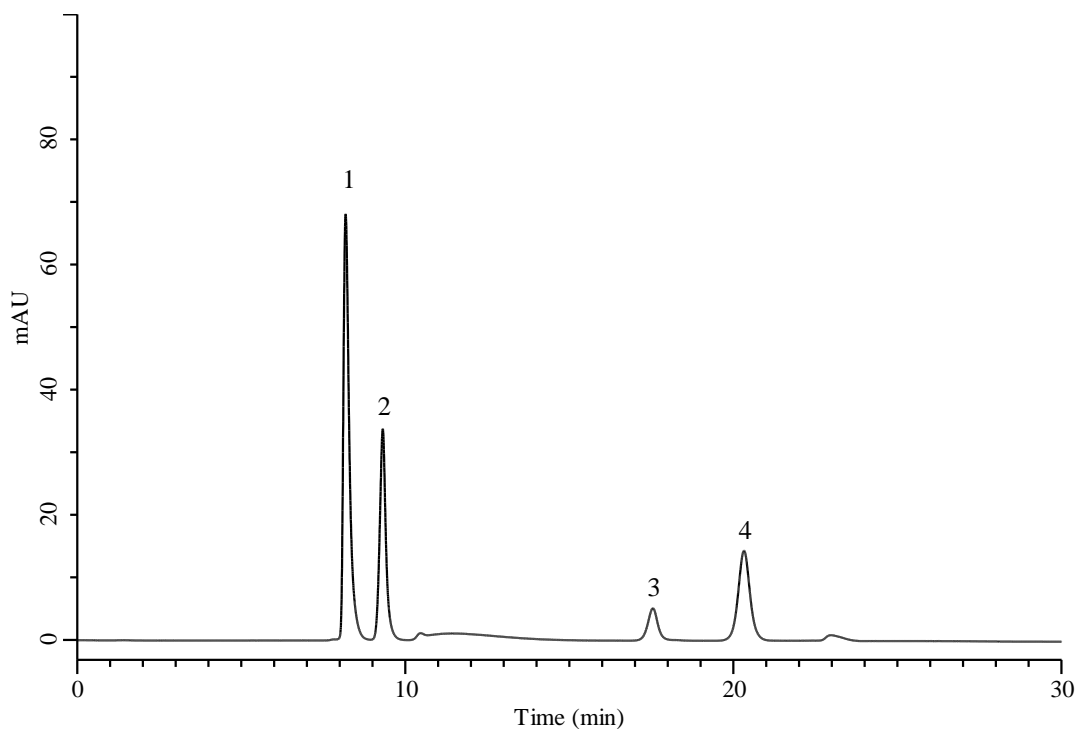


## Analysis of Chloroacetic acid



### Conditions

**System** : Chromaster HPLC system (HITACHI)  
**Column** : InertSphere FA-1 (GL Sciences Inc.)  
 (9  $\mu$  m, 300 x 7.8 mm I.D.)  
**Column Cat. No.** : 5020-11003  
**Eluent** : 3 mM HClO<sub>4</sub> in H<sub>2</sub>O  
**Flow Rate** : 0.5 mL/min  
**Col. Temp.** : 35 °C  
**Detection** : UV 210 nm  
**Injection Vol.** : 10  $\mu$  L  
**Sample** : Standard

### Analyte:

1.	Trichloroacetic acid	100 mg/L
2.	Dichloroacetic acid	100 mg/L
3.	Chloroacetic acid	100 mg/L
4.	Bromoacetic acid	100 mg/L