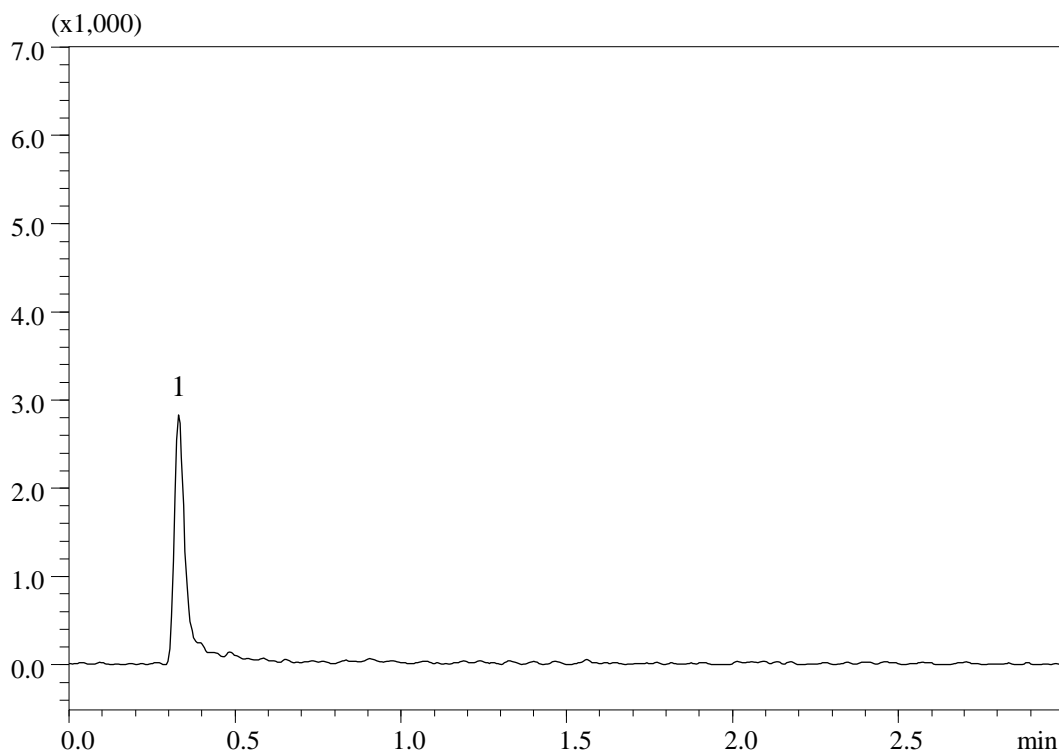


Analysis of Zoledronic acid



Conditions

System : Nexera HPLC system (Shimadzu)
LCMS-8030 Plus (Shimadzu)

Column : IM Column InertSustainSwift C18
(GL Sciences Inc.)
(3 μ m, 50 x 2.1 mm I.D.)

Column Cat. No. : 5020-32015

Eluent : 5 mM HCOONH₄ in H₂O

Flow Rate : 0.4 mL/min

Col. Temp. : 40 °C

Detection : MS/MS (ESI, Negative, SRM)

Analyte: Q1/Q3
1. : Zoledronic acid 271.00/189.10 500 μ g/L

Nebulizing gas flow	Heating gas flow	Interface temperature	DL temperature	Heat block temperature	Drying gas flow
2 L/min	15 L/min	300 °C	250 °C	400 °C	15 L/min

Injection Vol. : 1 μ L
Sample : Standard