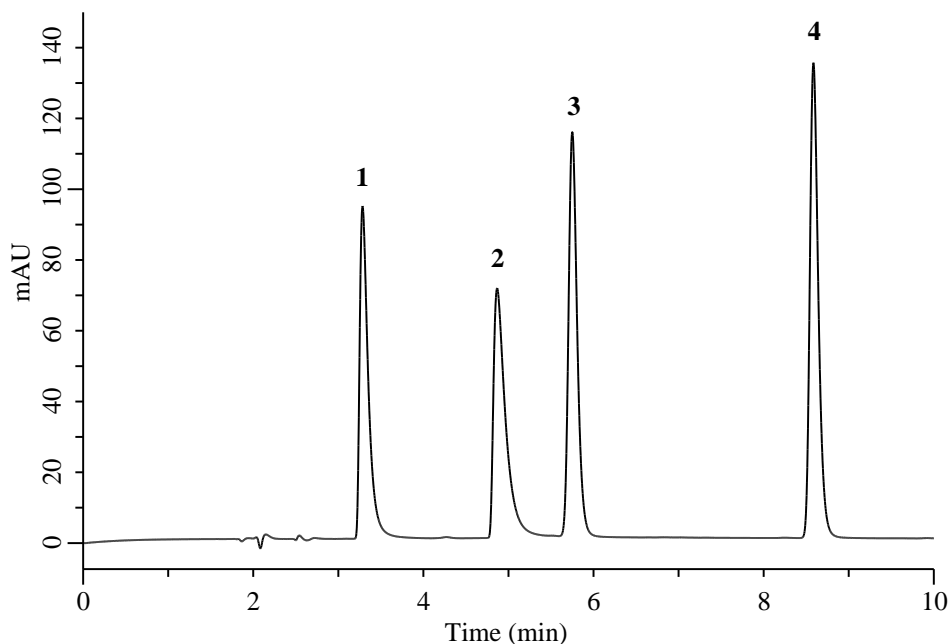


## Analysis of Nucleotides and Cyclic nucleotides



### Conditions

**System** : Nexera-i HPLC system (Shimadzu)  
**Column** : InertSustain AX-C18 (GL Sciences Inc.)  
 (3  $\mu$ m, 150 x 2.1 mm I.D., Metal-free hardware)  
**Column Cat. No.** : 5020-91059  
**Eluent** : A) 200 mM HCOONH<sub>4</sub> in CH<sub>3</sub>OH  
 B) 10 mM HCOONH<sub>4</sub> in H<sub>2</sub>O

### Analyte:

1. GMP
2. 5'-AMP
3. cGMP
4. cAMP

(100 mg/L each)

Time (min)	A (vol %)	B (vol %)
0.0	10	90
7.5	25	75
10.0	35	65

**Flow Rate** : 0.2 mL/min  
**Col. Temp.** : 40 °C  
**Detection** : UV 254 nm  
**Injection Vol.** : 1  $\mu$  L  
**Sample** : Standard