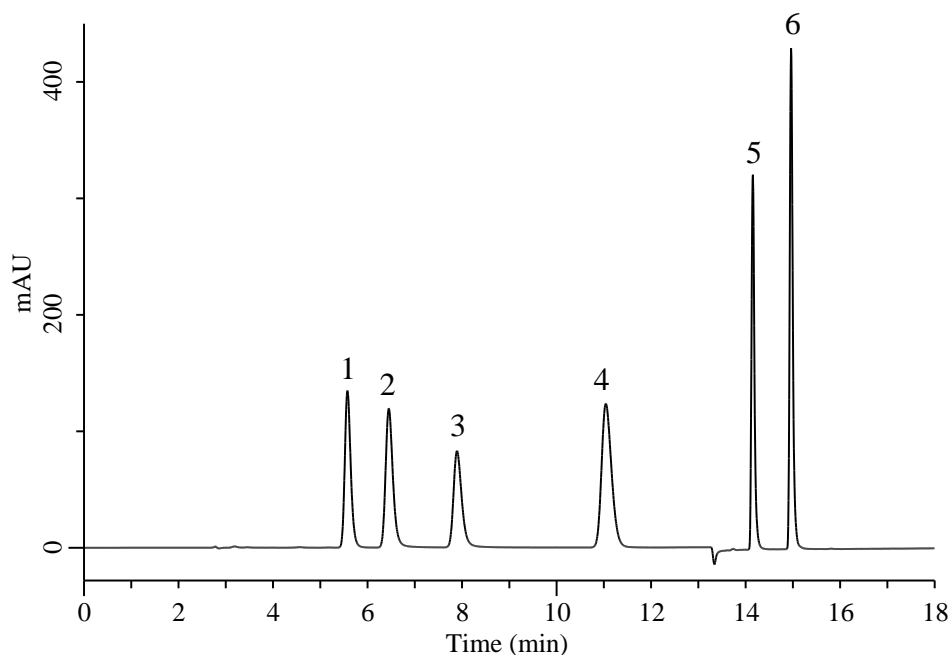


Analysis of ATP related compounds and Cyclic nucleotides (InertSustain C30)



Conditions

System : Chromaster HPLC system (HITACHI)
Column : InertSustain C30 (GL Sciences Inc.)
 (5 μ m, 250 x 4.6 mm I.D.)
Column Cat. No. : 5020-17145
Eluent : A) CH₃CN
 B) 20 mM K₂HPO₄ in H₂O (pH7.0, H₃PO₄)

Analyte:

1. GMP
 2. 5'-ATP
 3. 5'-ADP
 4. 5'-AMP
 5. cGMP
 6. cAMP

(100 mg/L each)

Time (min)	A (vol%)	B (vol%)
0.0	0	100
7.0	0	100
18.0	40	60

Flow Rate : 1.0 mL/min
Col. Temp. : 40 °C
Detection : UV 260 nm
Injection Vol. : 10 μ L
Sample : Standard