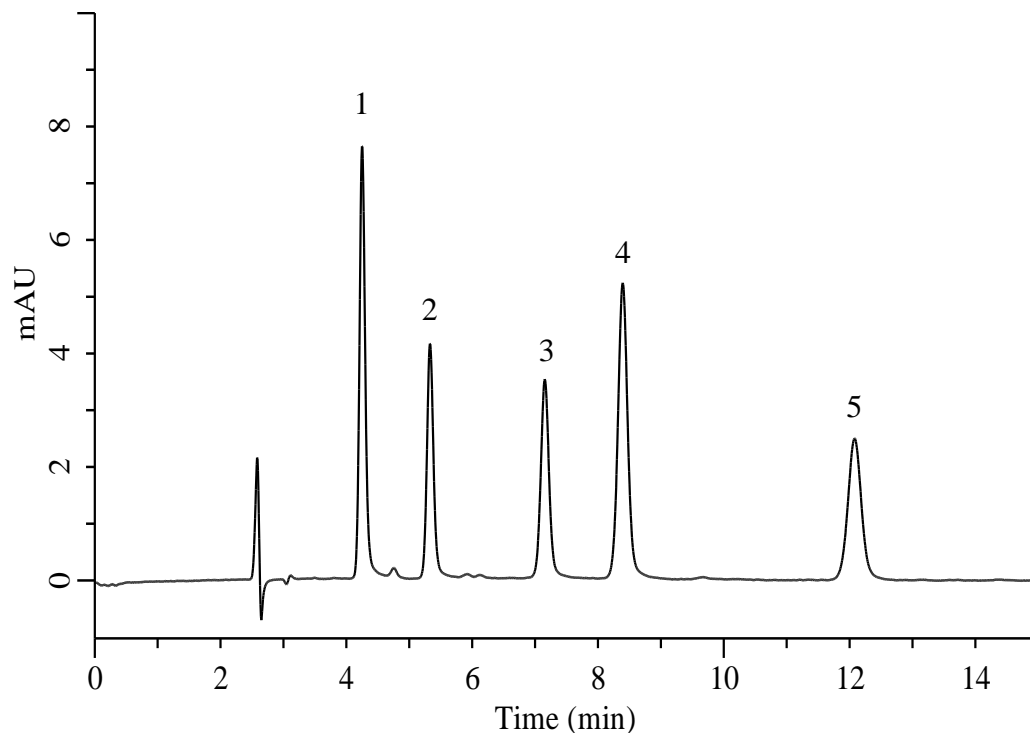


Analysis of Sudan dyes and Para red

(Under the Condition of food additive analysis method in food)



Conditions

System : Chromaster HPLC system (HITACHI)
Column : InertSustain C18 (GL Sciences Inc.)
 (5 μ m, 250 x 4.6 mm I.D.)
Column Cat. No. : 5020-07346
Eluent : A) CH₃CN
 B) H₂O
 A/B = 95/5, v/v
Flow Rate : 1.0 mL/min
Col. Temp. : 40 °C
Detection : VIS 500 nm
Injection Vol. : 20 μ L
Sample : Standard

Analyte:

1. Para red	0.5 μ g/mL
2. Sudan I	0.5 μ g/mL
3. Sudan II	0.5 μ g/mL
4. Sudan III	0.5 μ g/mL
5. Sudan IV	0.5 μ g/mL