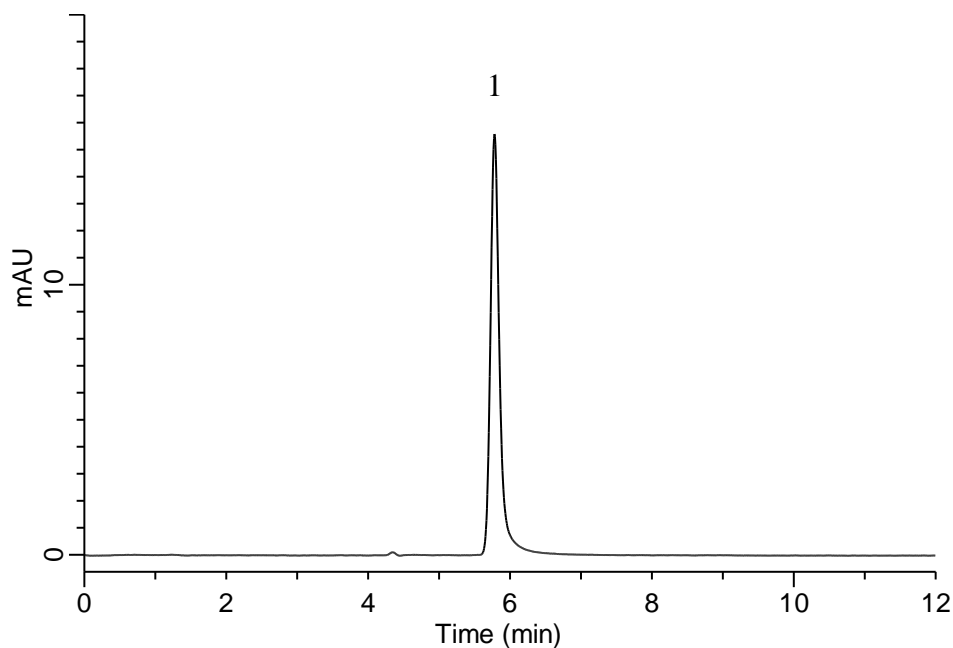


## Analysis of Tartaric acid

(Under the Condition of food additive analysis method in food, DL-Tartaric acid, L-Tartaric acid and its salts)



### Conditions

**System** : Chromaster HPLC system (HITACHI)

**Column** : InertSphere FA-1 (GL Sciences Inc.)  
(9  $\mu$  m, 300 x 7.8 mm I.D.)

**Column Cat. No.** : 5020-11003

**Eluent** : 3 mmol/L HClO<sub>4</sub> in H<sub>2</sub>O

**Flow Rate** : 1.0 mL/min

**Col. Temp.** : 40 °C

**Detection** : UV 220 nm

**Injection Vol.** : 10  $\mu$  L

**Sample** : Standard

### **Analyte:**

1. Tartaric acid 200  $\mu$  g/mL