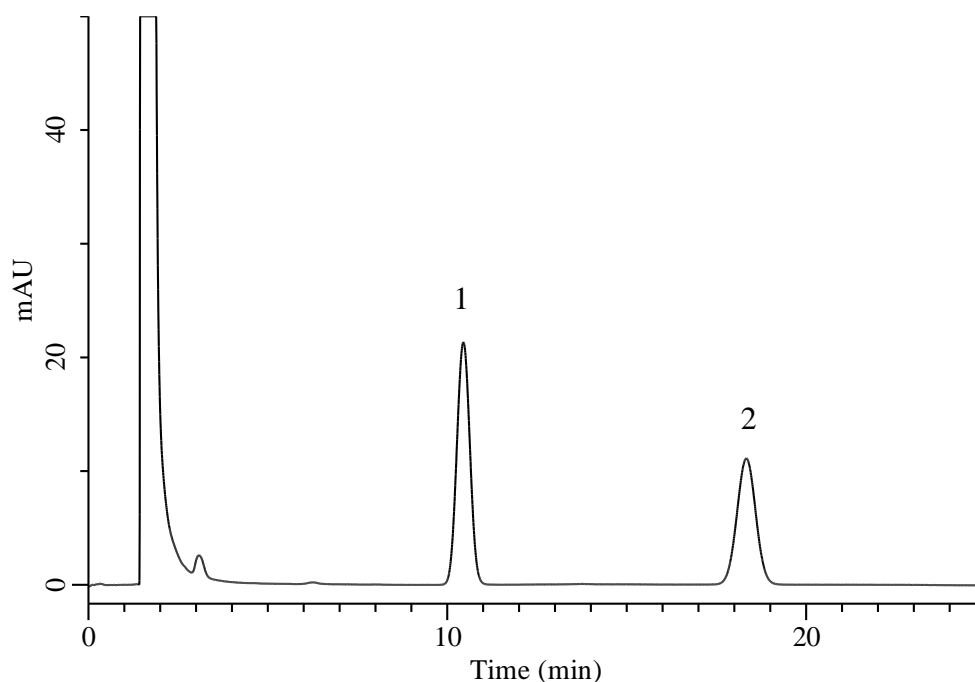


## Analysis of L-Ascorbyl palminate and L-Ascorbic stearate

(Under the Condition of food additive analysis method in food)



### Conditions

**System** : Chromaster HPLC system (HITACHI)  
**Column** : InertSustain C18 (GL Sciences Inc.)  
 (5  $\mu$  m, 150 x 4.6 mm I.D.)

**Column Cat. No.** : 5020-07345

**Eluent** : A) CH<sub>3</sub>OH  
 B) Buffer\*  
 A/B = 85/15, v/v

**Flow Rate** : 1.0 mL/min

**Col. Temp.** : 35 °C

**Detection** : UV 254 nm

**Injection Vol.** : 40  $\mu$  L

**Sample** : Standard

### Analyte:

1. L-Ascorbyl palminate 10  $\mu$  g/mL  
 2. L-Ascorbic stearate 10  $\mu$  g/mL

\* Dissolve 7.80 g of sodium dihydrogen phosphate in 900 mL of water, adjust pH to 2.0 with phosphoric acid, and add water to make 1000 mL.