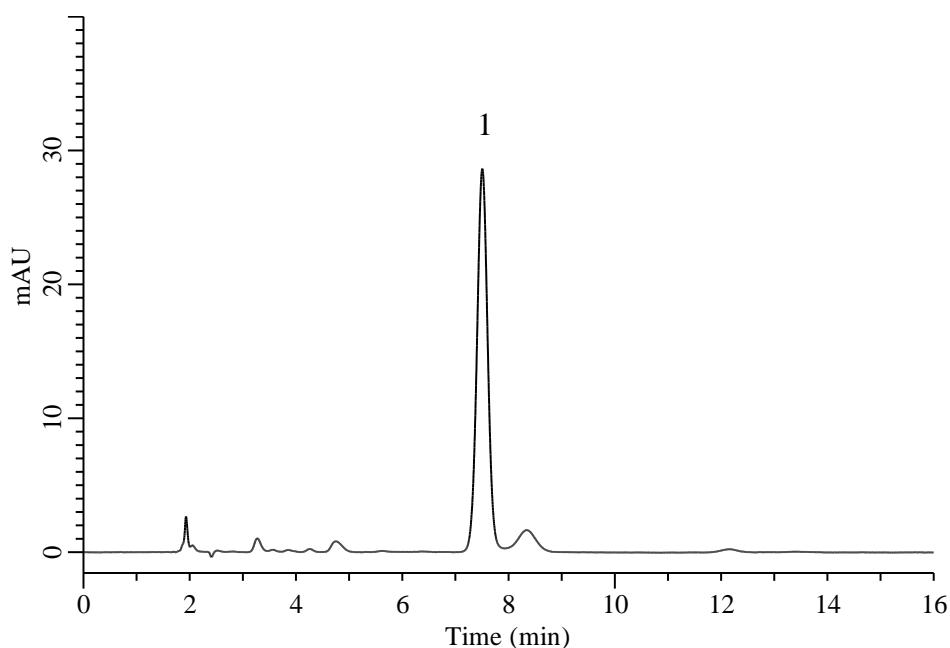


Analysis of Lithium lactylate

(Under the Condition of food additive analysis method in food,
Calcium Stearoyl Lactylate and Sodium Stearoyl Lactylate)



Conditions

System : Chromaster HPLC system (HITACHI)
Column : InertSustain C8 (GL Sciences Inc.)
 (5 μ m, 150 x 4.6 mm I.D.)
Column Cat. No. : 5020-16027
Eluent : A) CH₃OH
 B) Solution*
 A/B = 25/75, v/v
Flow Rate : 1.0 mL/min
Col. Temp. : 40 °C
Detection : VIS 400 nm
Injection Vol. : 20 μ L
Sample : Standard

Analyte:

1. Lithium lactylate 10 μ g/mL

* 0.1vol% Formic Acid: Take 11 mL of formic acid and make up to 1000 mL with water. Dilute 10 times and use.