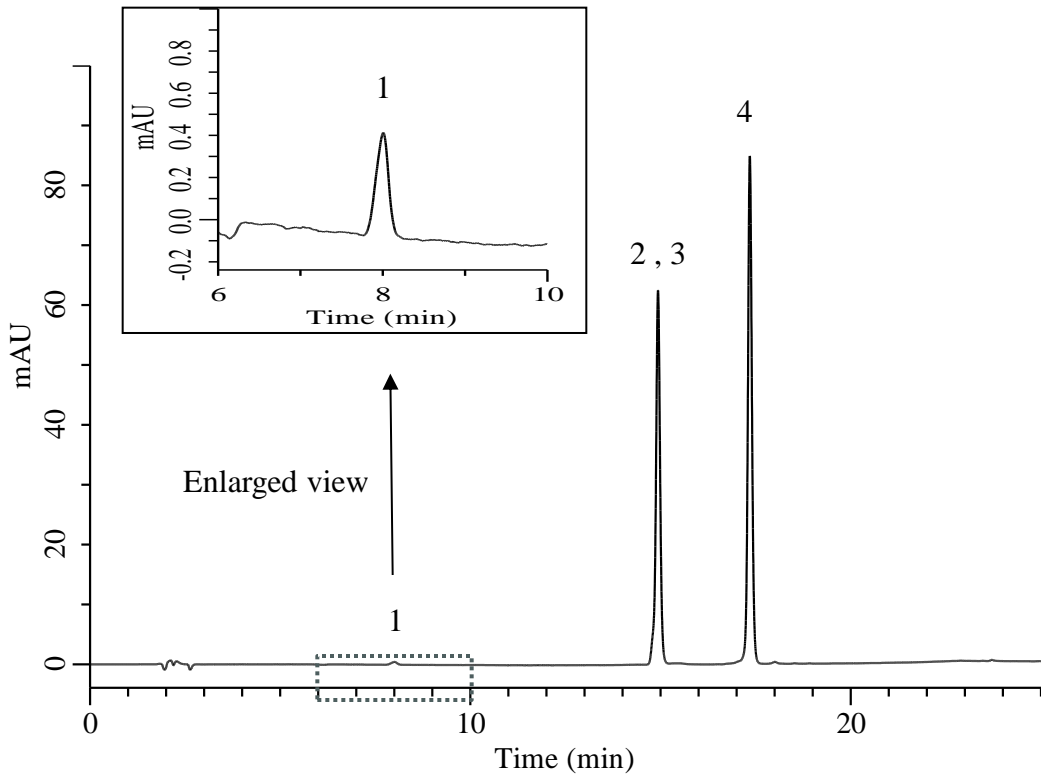


Analysis of Natamycin (Analytical Method A)

(Under the Condition of food additive analysis method in food)

Data No. LB857-7111



Conditions

- System** : Primaide HPLC system (HITACHI)
- Column** : InertSustain AQ-C18 (GL Sciences Inc.)
(5 μ m, 150 x 4.6 mm I.D.)
- Column Cat. No.** : 5020-89730
- Eluent** : A) 5% CH₃COOH in CH₃OH
B) 5% CH₃COOH in H₂O

Analyte:

- 1. Saccharin 5 μ g/mL
- 2. Sorbic acid 5 μ g/mL
- 3. Dehydroacetic acid 5 μ g/mL
- 4. Natamycin 5 μ g/mL

Time (min)	A (vol %)	B (vol %)
0.0	0	100
2.0	0	100
20.0	100	0
25.0	100	0

- Flow Rate** : 1.0 mL/min
- Col. Temp.** : 40 °C
- Detection** : UV 304 nm
- Injection Vol.** : 20 μ L
- Sample** : Standard