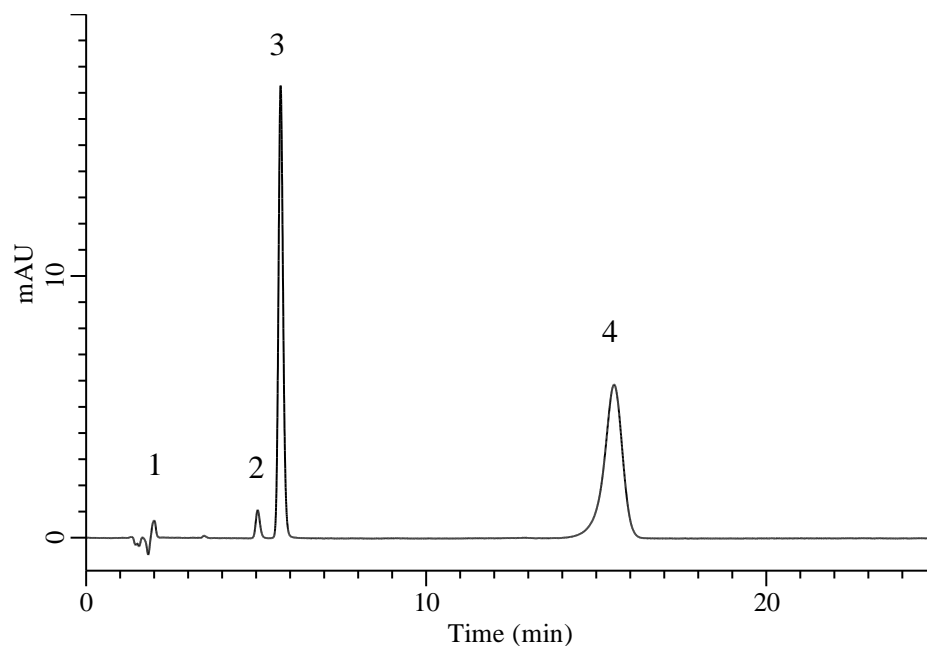


Analysis of Natamycin (Analytical Method B)

(Under the Condition of food additive analysis method in food)



Conditions

System : Primaide HPLC system (HITACHI)
Column : InertSustain C18 (GL Sciences Inc.)
 (5 μ m, 150 x 4.6 mm I.D.)
Column Cat. No. : 5020-07345
Eluent : A) H₂O
 B) CH₃OH
 C) CH₃CN
 D) CH₃COOH
 A/B/C/D = 60/20/15/5 , v/v/v/v
Flow Rate : 1.0 mL/min
Col. Temp. : 40 °C
Detection : UV 304 nm
Injection Vol. : 20 μ L
Sample : Standard

Analyte:

1. Saccharin	5 μ g/mL
2. Sorbic acid	5 μ g/mL
3. Dehydroacetic acid	5 μ g/mL
4. Natamycin	5 μ g/mL