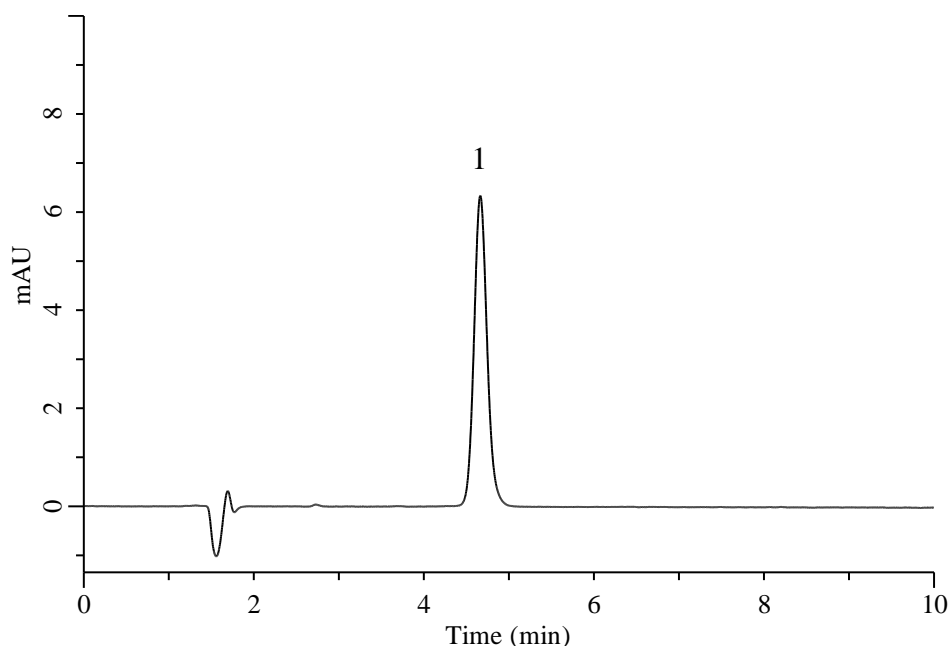


## Analysis of Glycyrrhizinate acid

(Under the Condition of food additive analysis method in food, Disodium Glycyrrhizinate)



### Conditions

**System** : Primaide HPLC system (HITACHI)  
**Column** : InertSustain C18 (GL Sciences Inc.)  
 (5  $\mu$  m, 150 x 4.6 mm I.D.)  
**Column Cat. No.** : 5020-07345  
**Eluent** : A) CH<sub>3</sub>CN  
 B) CH<sub>3</sub>OH  
 C) 2 % CH<sub>3</sub>COOH in H<sub>2</sub>O  
 A/B/C = 12/5/15, v/v/v  
**Flow Rate** : 1.0 mL/min  
**Col. Temp.** : 40 °C  
**Detection** : UV 254 nm  
**Injection Vol.** : 10  $\mu$  L  
**Sample** : Standard

### Analyte:

1. Glycyrrhizic acid 10  $\mu$  g/mL