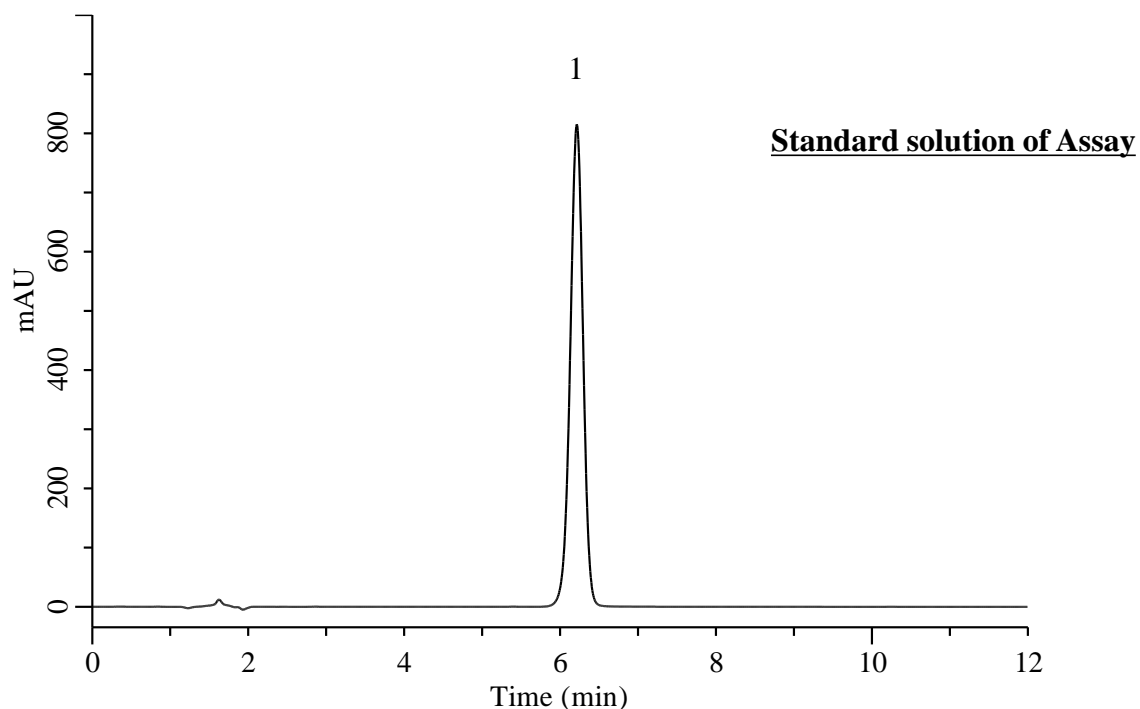


## Analysis of Paclitaxel

(Under the Condition of USP43-NF38, Paclitaxel Injection)



### Conditions

**System** : Chromaster HPLC system (HITACHI)  
**Column** : InertSustain PFP (GL Sciences Inc.)  
 (5  $\mu$  m, 250 x 4.0 mm I.D.)  
**Column Cat. No.** : 5020-87723  
**Eluent** : CH<sub>3</sub>CN/H<sub>2</sub>O = 45/55, v/v  
**Flow Rate** : 1.5 mL/min  
**Col. Temp.** : 40 °C  
**Detection** : UV 227 nm (5430 DAD)  
**Injection Vol.** : 10  $\mu$  L  
**Sample** : Standard

### Analyte:

1. Paclitaxel                      0.6 mg/mL  
  
 Retention Time                    : 6.21 (6.0 – 10.0)  
  
 RSD of the  
 peak area (%) (n=6)              : 0.65 ( $\leq$  1.5)