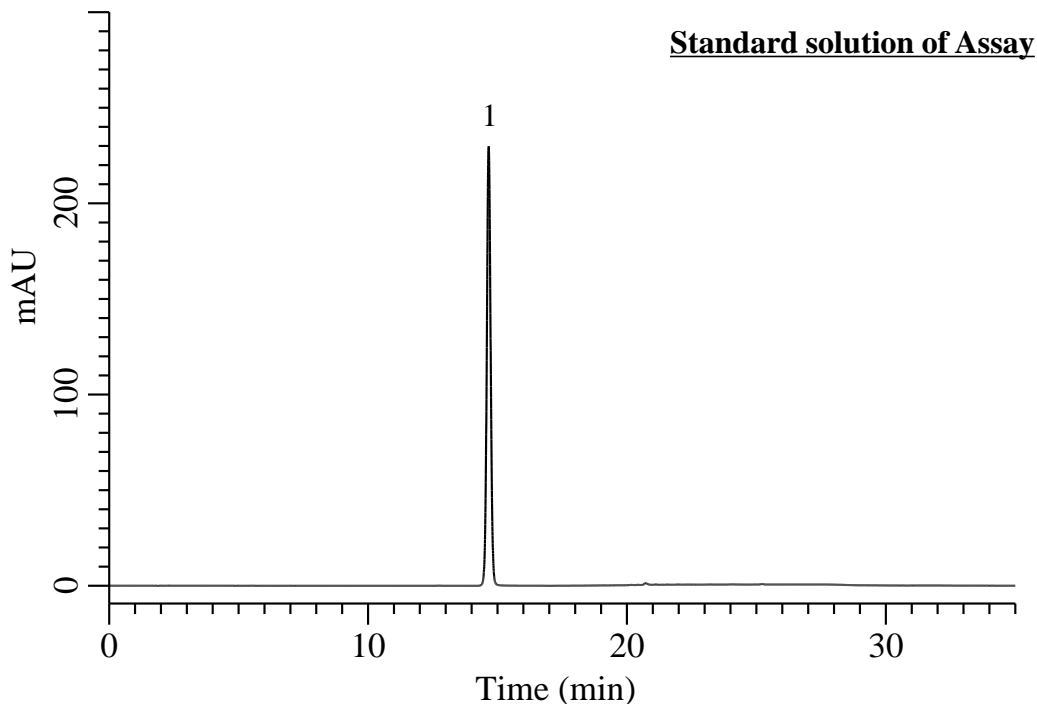


Analysis of Propyl gallate

(Under the Condition of the draft for USP, Propyl Gallate)



Conditions

System : Chromaster HPLC system (HITACHI)
Column : Inertsil WP300 C18 (GL Sciences Inc.)
 (5 μ m, 150 x 4.6 mm I.D.)
Column Cat. No. : 5020-05845
Eluent : A) CH₃CN/CH₃OH = 50/50, v/v
 B) 0.4 % HCOOH in H₂O

Analyte:
 1. Propyl gallate 0.1 mg/mL

Tailing factor : 1.03 (\leq 1.5)

RSD of the peak area (%) (n=6) : 0.08 (\leq 1.0)

Time (min)	A (vol %)	B (vol %)
0	10	90
14	30	70
20	95	5
25	95	5
29	10	90
35	10	90

Flow Rate : 1.2 mL/min
Col. Temp. : 35 °C
Detection : UV 272 nm
Injection Vol. : 10 μ L
Sample : Standard