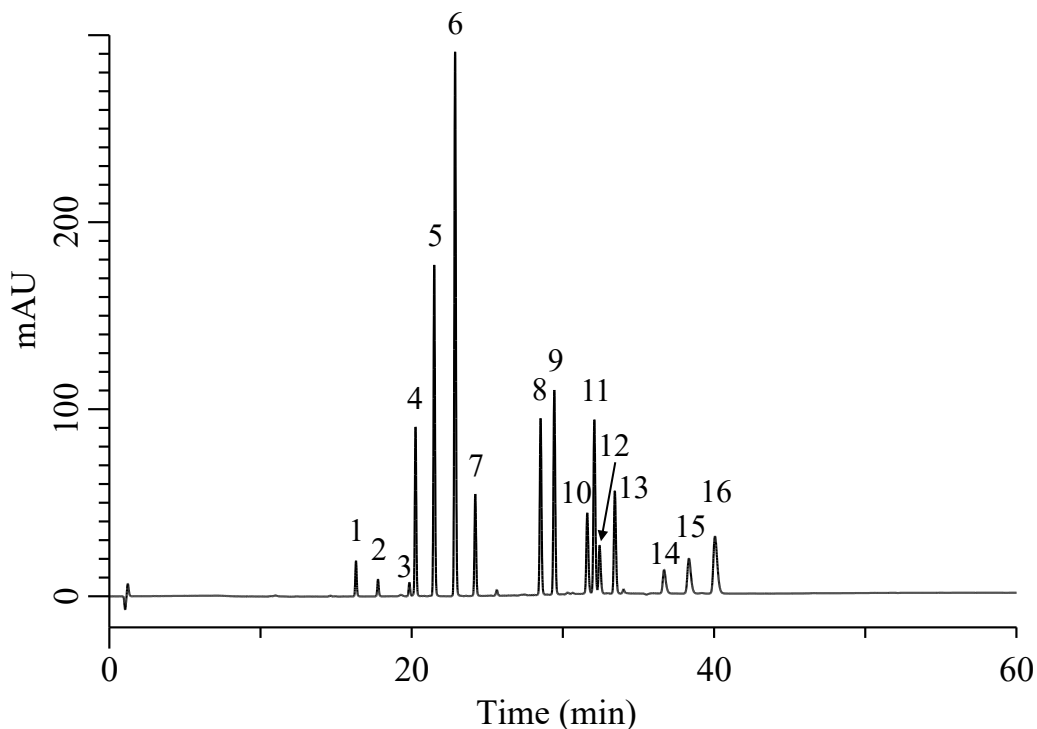


Analysis of Polynuclear Aromatic Hydrocarbons (PAHs) (Under the Condition of EPA Method 610 Polynuclear Aromatic Hydrocarbons)



Conditions

System : Chromaster system (HITACHI)
Column : Inertsil ODS-P (GL Sciences Inc.)
 (HP 3 μ m, 250 x 3.0 mm I.D.)
Column Cat. No. : 5020-90850
Eluent : A) CH₃CN
 B) H₂O

Analyte:

1. Naphthalene	0.1 mg/mL
2. Acenaphthylene	0.1 mg/mL
3. Acenaphthene	0.1 mg/mL
4. Fluorene	0.1 mg/mL
5. Phenanthrene	0.1 mg/mL
6. Anthracene	0.1 mg/mL
7. Fluoranthene	0.1 mg/mL
8. Benzo[a]anthracene	0.1 mg/mL
9. Chrysene	0.1 mg/mL
10. Benzo[a]pyrene	0.1 mg/mL
11. Benzo[b]fluoranthene	0.1 mg/mL
12. Pyrene	0.1 mg/mL
13. Benzo[k]fluoranthene	0.1 mg/mL
14. Dibenzo[a,h]anthracene	0.1 mg/mL
15. Benzo[g,h,i]perylene	0.1 mg/mL
16. Indeno[1,2,3-cd]pyrene	0.1 mg/mL

Time(min)	A(%)	B(%)
0	40	60
5	40	60
30	100	0
60	100	0
60.1	40	60
75	40	60

Flow Rate : 0.8 mL/min
Col. Temp. : 25 °C
Detection : UV 254 nm
Injection Vol. : 10 μ L
Sample : Standard