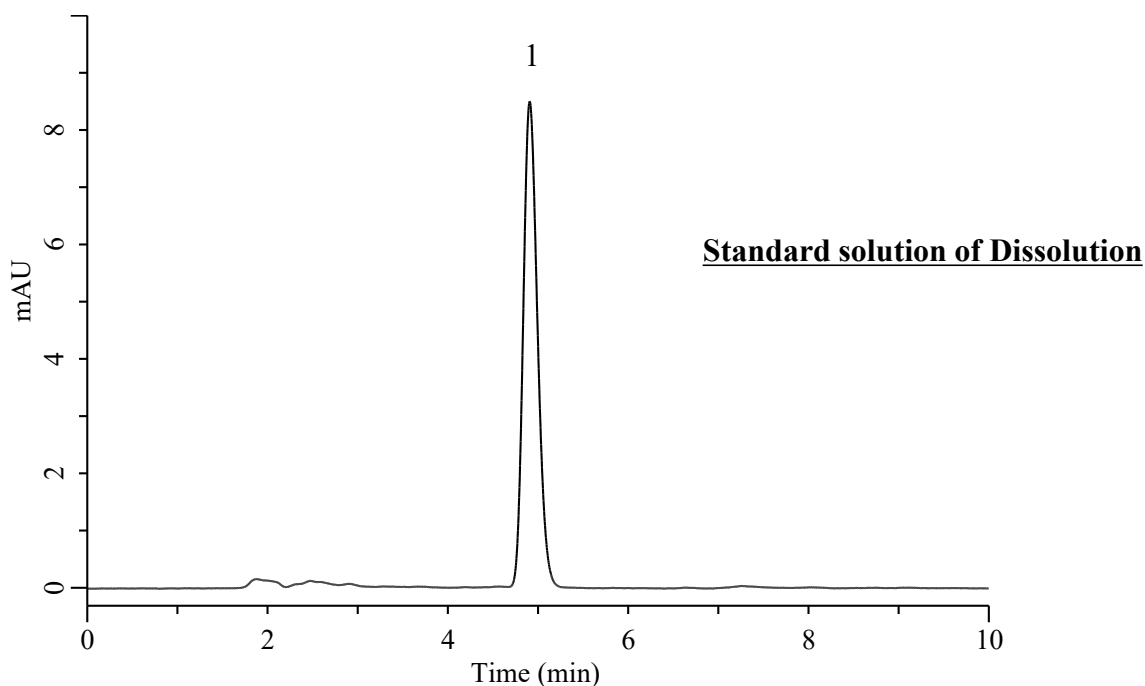


Analysis of Aripiprazole

(Under the Condition of the draft for the Japanese Pharmacopoeia, Aripiprazole Tablets)



Conditions

System : Chromaster HPLC system (HITACHI)
Column : InertSustain C18 (GL Sciences Inc.)
 (5 μ m, 250 x 4.6 mm I.D.)
Column Cat. No. : 5020-07346
Eluent : CH₃CN/CH₃OH/CH₃COOH/Solution*
 = 400/100/10/500, v/v/v/v
Flow Rate : 1.1 mL/min
Col. Temp. : 25 °C
Detection : UV 254 nm
Injection Vol. : 100 μ L
Sample : Standard

Analyte:

1. Aripiprazole 0.56 μ g/mL

Theoretical plates number : 4576 (\geq 3000)

Symmetry factor : 1.20 (\leq 2.0)

RSD of the peak area (%)(n=6) : 0.40 (\leq 2.0)

* Dissolve 2.84 g of anhydrous sodium sulfate in water to make 1000 mL.