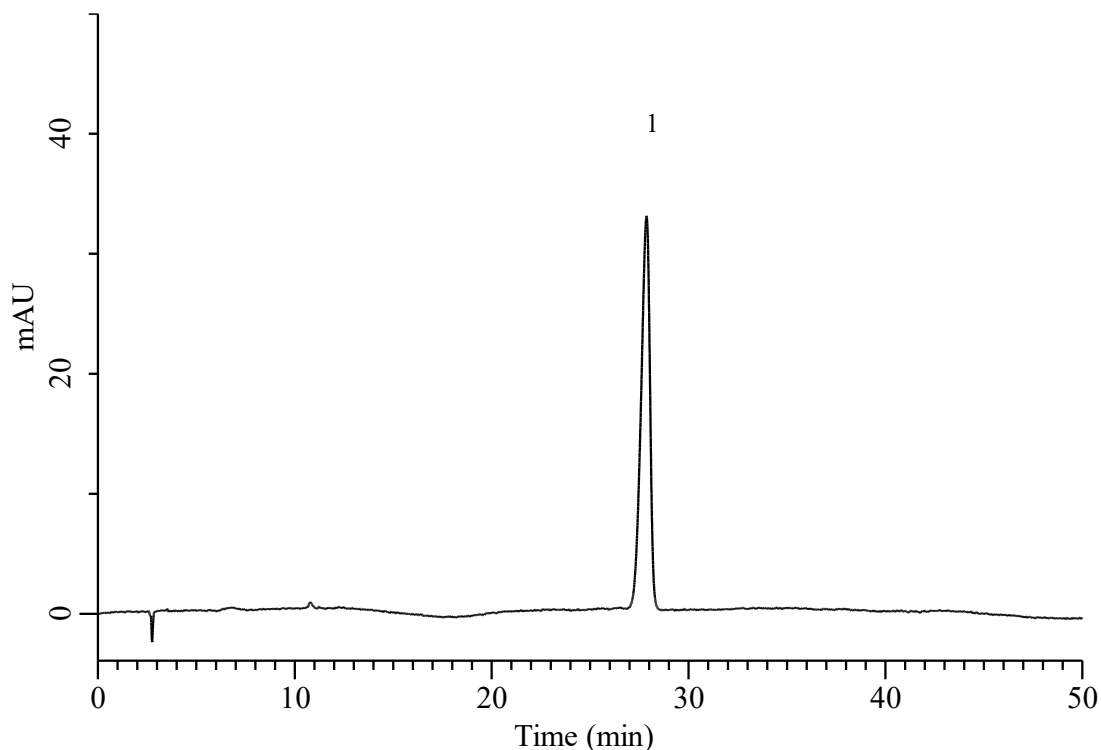


## Analysis of Amikacin sulfate



### Conditions

**System** : Chromaster HPLC system (HITACHI)  
**Column** : InertSustainSwift C18 (GL Sciences Inc.)  
 (5  $\mu$  m, 250 x 4.6 mm I.D.)  
**Column Cat. No.** : 5020-88027  
**Eluent** : Solution\*  
**Flow Rate** : 1.0 mL/min  
**Col. Temp.** : 40 °C  
**Detection** : UV 200 nm  
**Injection Vol.** : 1  $\mu$  L  
**Sample** : Standard

### Analyte:

1. Amikacin sulfate	3.74 mg/L
Tailing factor	:0.81( $\cong$ 1.7)
RSD of the peak area (%)(n=6)	:0.83( $\cong$ 1.5)

\*A mixture prepared with carbon dioxide-free water, containing 1.8 g/L of sodium octanesulfonate, 20 g/L of anhydrous sodium sulfate, 5.8 % v/v of acetonitrile, and 5 % v/v of 0.2 M potassium dihydrogen phosphate previously adjusted to pH 3.0 with dilute phosphoric acid.