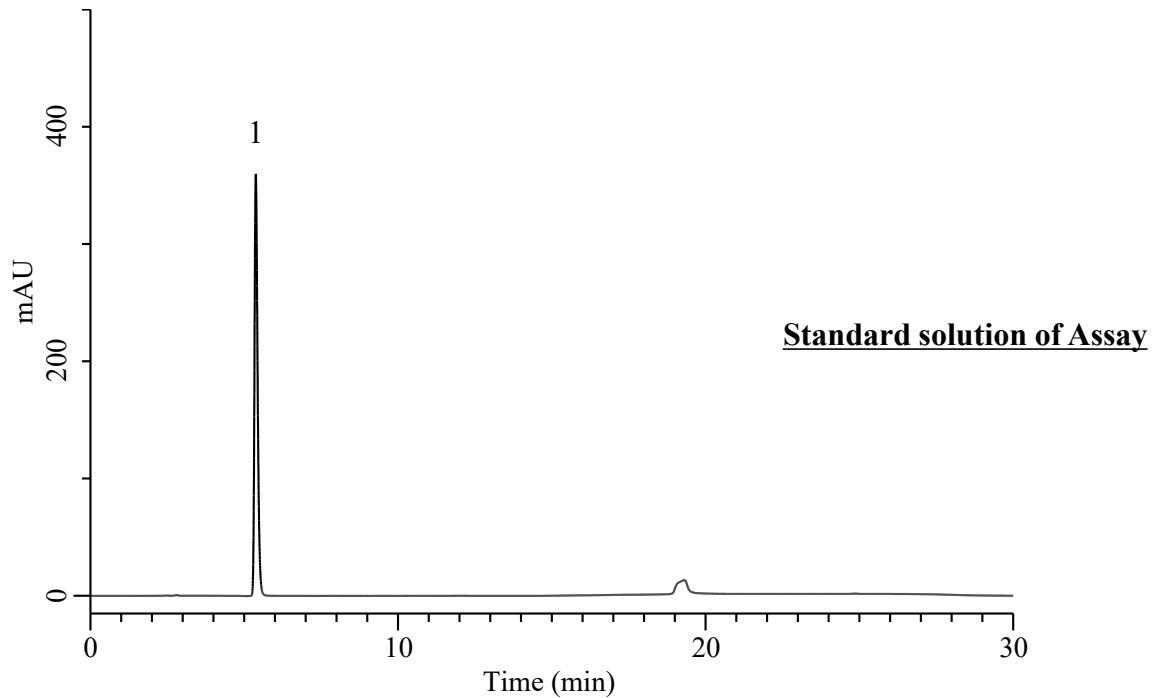


Analysis of Glacial Acetic Acid (Under the Condition of the draft for USP, Acetic Acid Irrigation)



Conditions

System : Primaide HPLC system (HITACHI)
Column : InertSustain AQ-C18 (GL Sciences Inc.)
 (5 μ m, 250 x 4.6 mm I.D.)
Column Cat. No. : 5020-89731
Eluent : A) CH₃CN
 B) Solution*

Analyte:

1. Glacial acetic acid 1.25 mg/mL

Tailing factor : 1.32 (0.8 - 1.8)

RSD of the peak area (%) (n=6) : 0.04 (\leq 0.73)

Time (min)	A (vol %)	B (vol %)
0	2	98
8	2	98
15	30	70
22	30	70
23	2	98
30	2	98

Flow Rate : 1.0 mL/min
Col. Temp. : 40 °C
Detection : UV 215 nm
Injection Vol. : 80 μ L
Sample : Standard

* : Dissolve 1.36 g of potassium phosphate monobasic in 1000 mL of water. Adjust with 6.9 mL of phosphoric acid diluted with water to 100 mL to a pH of 2.5.