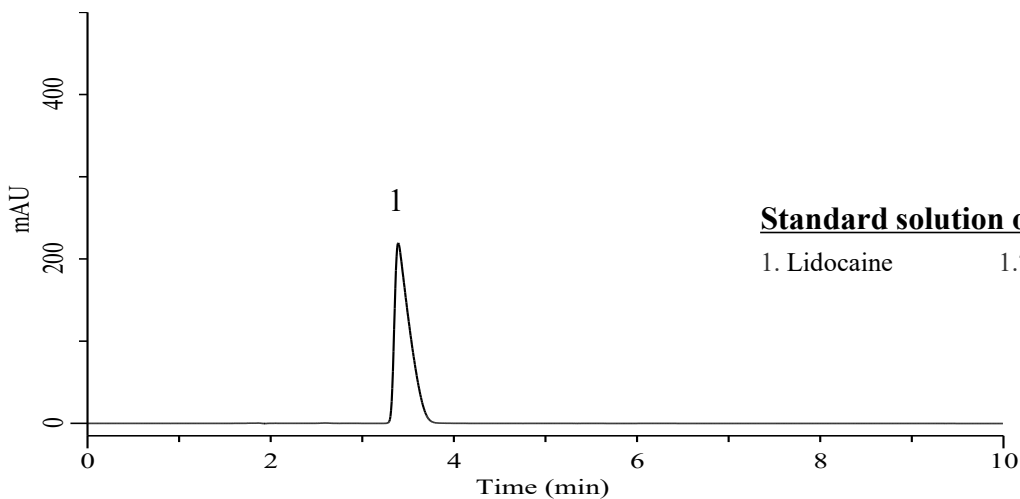
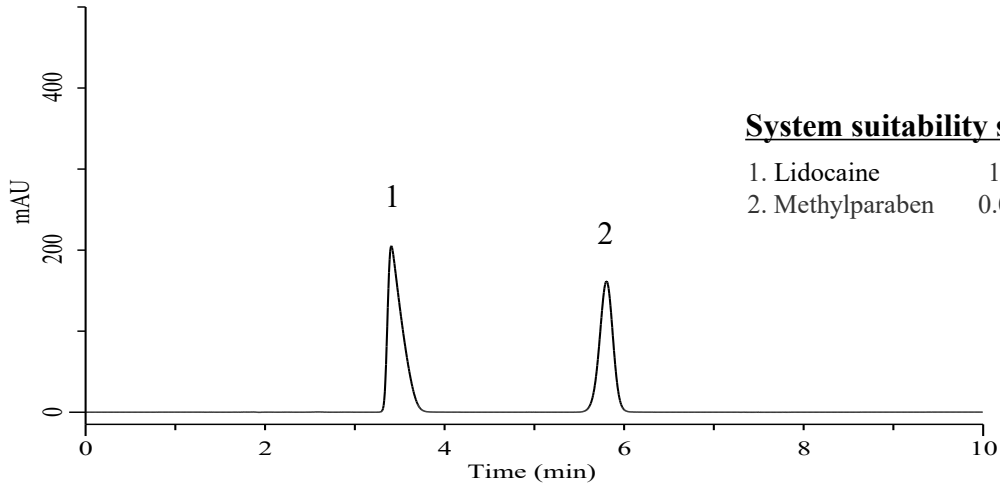


Analysis of Lidocaine

(Under the Condition of the draft for USP, Lidocaine)



Conditions

System : Chromaster PLUS HPLC system (HITACHI)
Column : Inertsil WP300 C18 (GL Sciences Inc.)
 (10 μ m, 300 x 3.9 mm I.D.)
Column Cat. No. : 5020-90660
Eluent : A) CH₃CN
 B) Solution*
 A/B = 20/80, v/v
Flow Rate : 1.5 mL/min
Col. Temp. : 40 °C
Detection : UV 254 nm (5430 DAD)
Injection Vol. : 20 μ L
Sample : Standard

Analyte:

1. Lidocaine
 2. Methylparaben

Resolution : 8.02 (\geq 3.0)

RSD of the peak area (%) (n=6) : 0.07 (\leq 1.5)

* : Water and glacial acetic acid (930:50). Adjust with 1 N sodium hydroxide to a pH of 3.40.