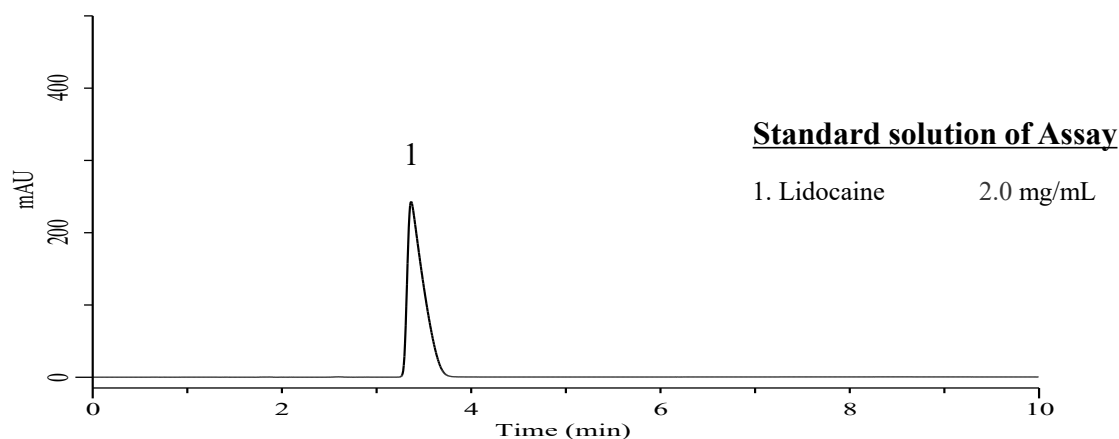
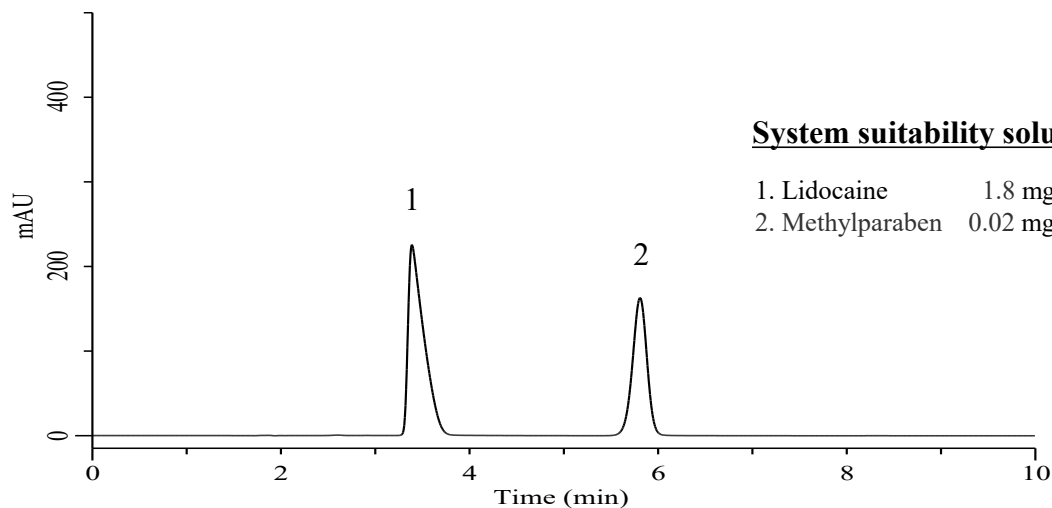


## Analysis of Lidocaine

(Under the Condition of the draft for USP, Lidocaine Hydrochloride)



### Conditions

**System** : Chromaster PLUS HPLC system (HITACHI)  
**Column** : Inertsil WP300 C18 (GL Sciences Inc.)  
 (10  $\mu$  m, 300 x 3.9 mm I.D.)  
**Column Cat. No.** : 5020-90660  
**Eluent** : A) CH<sub>3</sub>CN  
 B) Solution\*  
 A/B = 20/80, v/v  
**Flow Rate** : 1.5 mL/min  
**Col. Temp.** : 40 °C  
**Detection** : UV 254 nm (5430 DAD)  
**Injection Vol.** : 20  $\mu$  L  
**Sample** : Standard

### Analyte:

1. Lidocaine  
 2. Methylparaben

Resolution : 7.93 ( $\geq 3.0$ )

RSD of the peak area (%) (n=6) : 0.07 ( $\leq 1.5$ )

\* : Water and glacial acetic acid (930:50). Adjust with 1 N sodium hydroxide to a pH of 3.40.